



6/11-15 Chapman Street Gymea NSW

2 1 1

Positioned on the first floor of a well-maintained complex, this contemporary light filled apartment offers spacious open plan living and dining areas that seamlessly extend to a large sun-drenched balcony perfect for year-round entertaining.

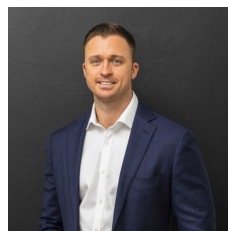
Type : Apartment

Price : Contact Agent

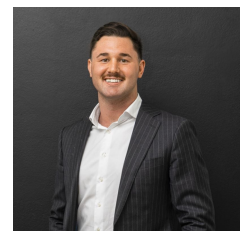
View : <https://www.mattblakproperty.com.au/8181293>

The apartment boasts modern interiors, lift access from basement providing an easy and low maintenance lifestyle. Located within walking distance of Gymea Village, Station, schools and amenities.

- Generous open plan living spaces connect to a generous outdoor entertainers' balcony
- Bright light filled interiors enhances space and comfort
- Stone kitchen with quality appliances and plenty of

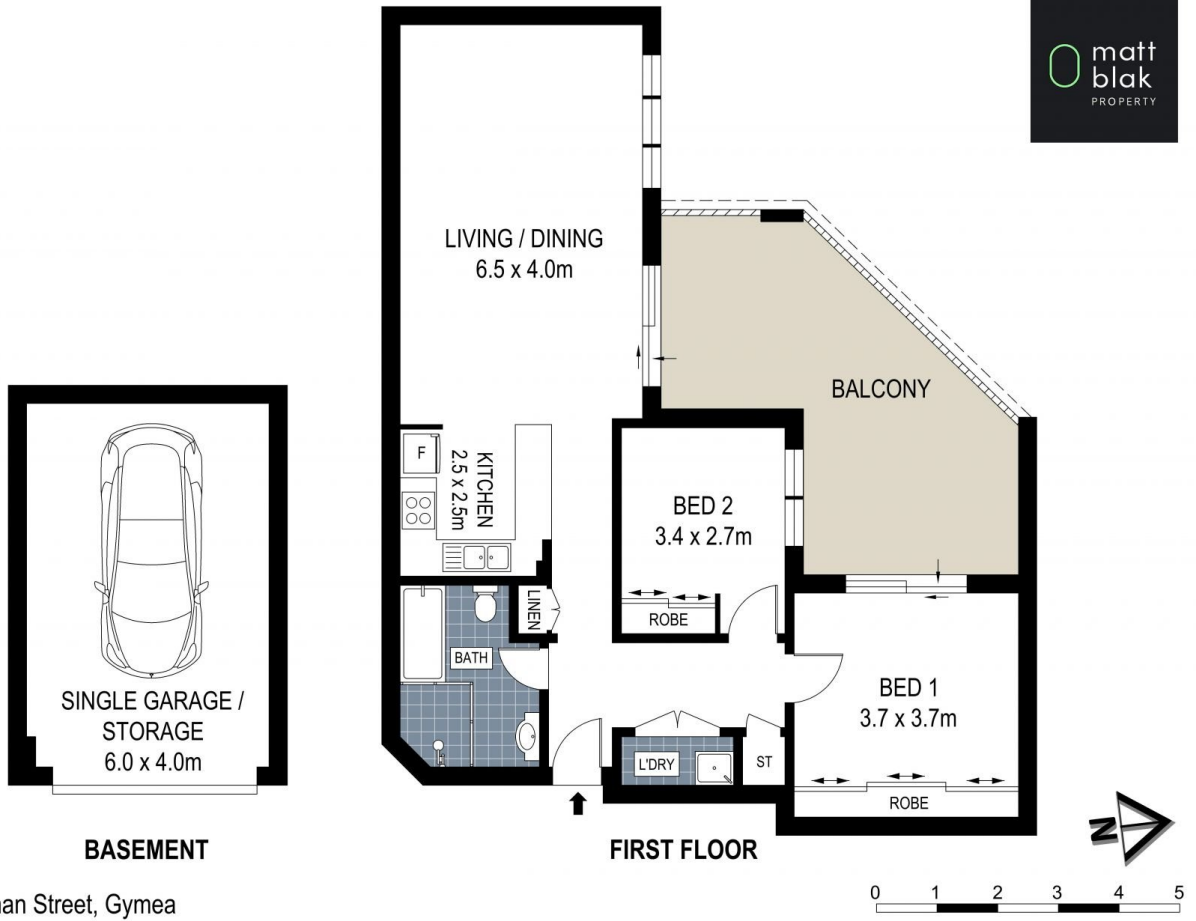


Matthew Johnston
9529 3433



Billy Burke
9529 3433

[For full version visit the website](https://www.mattblakproperty.com.au)



ADDRESS:
6 / 11-15 Chapman Street, Gymea

DISCLAIMER: THIS IS FOR ILLUSTRATIVE PURPOSES ONLY, ALL DIMENSIONS ARE APPROXIMATE AND IT DOES NOT CONSTITUTE PART OF ANY LEGAL DOCUMENTS.