



**18 Pacific Crescent Maianbar NSW**

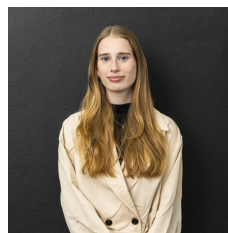
4 🛏 3 🍳 4 🚗

Escape to this hidden gem nestled in the tranquil corner of the Royal National Park and only footsteps from the beach. This beloved home offers you breathtaking ocean views and a location that gives you easy access to picturesque coastal lifestyle. A cherished three-bedroom residence, accompanied by a separate, fully equipped studio apartment, offering unparalleled access to the areas awe-inspiring natural wonders and hiking trails.

**Type** : House  
**Price** : \$1,350 per week  
**View** : <https://www.mattblakproperty.com.au/8153000>

**HIGHLIGHTS:**

- 20-minute ferry ride from Bundeena to Cronulla
- Approximately 20-minute drive from Sutherland
- Three bedroom to main residence PLUS separate self-contained studio



**Sophie Gardner**  
**9529 3433**

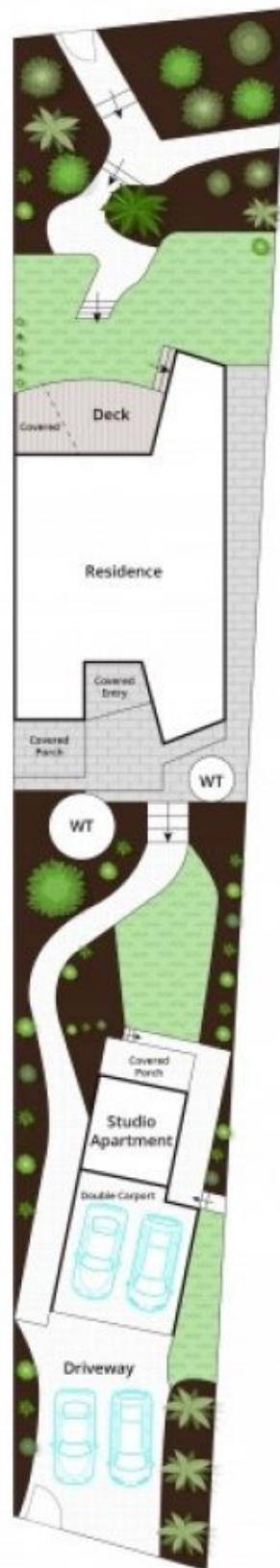
[For full version visit the website](https://www.mattblakproperty.com.au)



Studio Apartment



Ground Floor



Site Plan

Approx House Area 143m<sup>2</sup>  
Approx Land Area 1097m<sup>2</sup>

Whilst [bwm.com.au](http://bwm.com.au) has made every attempt to ensure the accuracy of the floor plan contained here, measurements are approximate and no responsibility is taken for any error, omission, or mis-statement. This plan is for illustrative purposes only.