



### 1/213 Kingsway Woollooware NSW

3 2 1

Welcome to this charming single-level 3-bedroom freestanding house, offering an effortless blend of comfort and functionality. Designed for easy living, this residence features spacious bedrooms, a well-appointed kitchen, and an open plan living and dining area that flows seamlessly to a private outdoor entertaining terrace. With an abundance of natural light, modern finishes, and thoughtful touches throughout, this home provides a perfect retreat for families or downsizers alike.

- Three generously sized bedrooms, each with built-in wardrobes offering ample storage
- Separate living and dining areas seamlessly flow onto the north-facing outdoor terrace & grassed yard.
- Modern kitchen featuring quality appliances & abundant

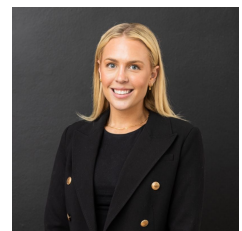
**Type** : House

**Price** : Private Negotiation

**View** : <https://www.mattblakproperty.com.au/8134143>



**Patrick Swanson**  
9529 3433



**Madison Long**  
9529 3433

[For full version visit the website](https://www.mattblakproperty.com.au)



## 1/213 Kingsway, Woollooware

3 2 1

Scale in metres, indicative only. Dimensions are approximate. All information contained herein is gathered from sources we believe to be reliable. However we cannot guarantee its accuracy and interested persons should rely on their own enquiries.