



35/13-15 Gerrale Street Cronulla NSW

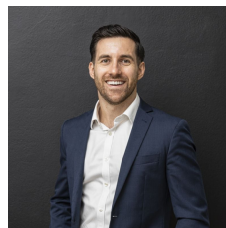
1 1 1

A unique opportunity for a ground floor apartment in the most central part of Cronulla. This well designed apartment full of character and New York styling. This property can be utilised with dual use as a residential apartment, commercial/retail suite or a combination of both (STCA). Located in the heart of Cronulla in a well maintained complex its one not to miss.

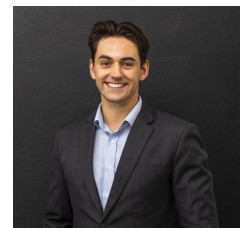
- Open plan living area features custom joinery and concealed split system air-conditioning
- Herringbone timber flooring and exposed brickwork throughout
- Designer kitchen with plenty of bench and cupboard space
- Bosch stainless steel appliances & integrated dishwasher

[For full version visit the website](https://www.mattblakproperty.com.au/81331)

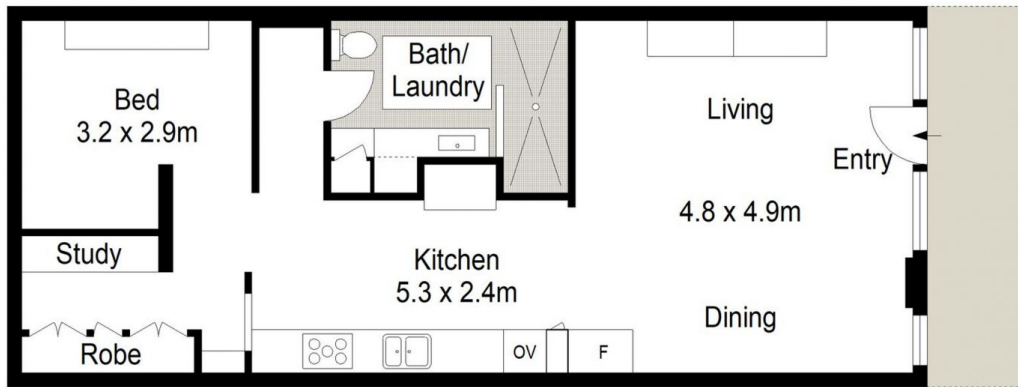
Type : Apartment
Price : Private Negotiation
Land Size : 63 sqm
View : <https://www.mattblakproperty.com.au/81331>
 13



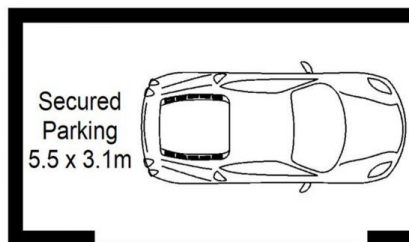
Adam Sharp
9529 3433



Declan Fallah
9529 3433



GROUND FLOOR



BASEMENT



35/13-15 Gerrale Street, Cronulla

1 **1** **1**

Scale in metres, indicative only. Dimensions are approximate. All information contained herein is gathered from sources we believe to be reliable. However we cannot guarantee its accuracy and interested persons should rely on their own enquiries.