

64 Alkaringa Road Gymea Bay NSW

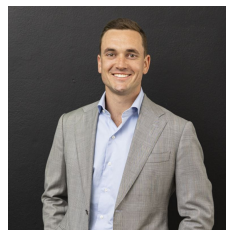
4 2 2

Tucked away at the end of a peaceful cul-de-sac, this solid full-brick family home spans three levels, offering a variety of indoor and outdoor living spaces with stunning views of Gymea Bay. The ideal floor plan for growing families includes a master bedroom separate to a fourth bedroom on their own level and two additional bedrooms off the main living and entertaining area, providing ample space for everyone to retreat. Located in a family-friendly position, it's just moments from Gymea Bay Baths, local shopping, schools, and transport.

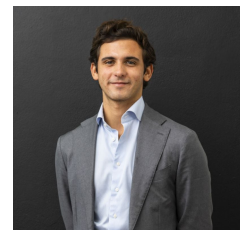
- Large open-plan kitchen, living and dining area flows seamlessly onto an expansive terrace with exceptional views of the bay
- The lower level offers a generous rumpus room that

[For full version visit the website](https://www.mattblakproperty.com.au/8129916)

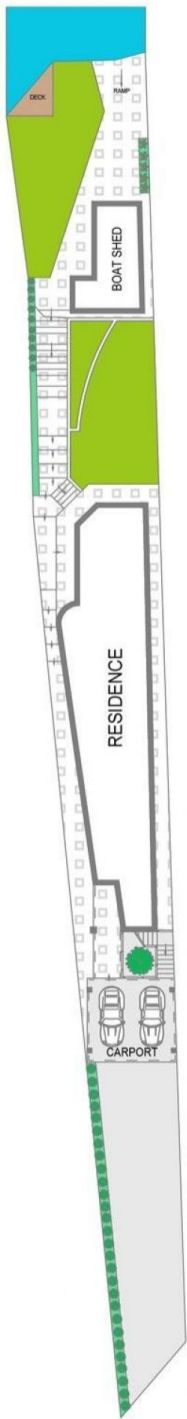
Type : House
Price : Off Market
Land Size : 569.1 sqm
View : <https://www.mattblakproperty.com.au/8129916>



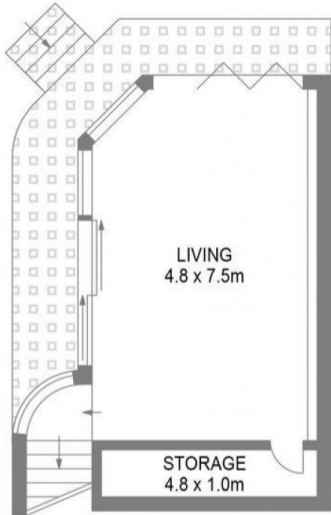
Blake Spooner
9529 3433



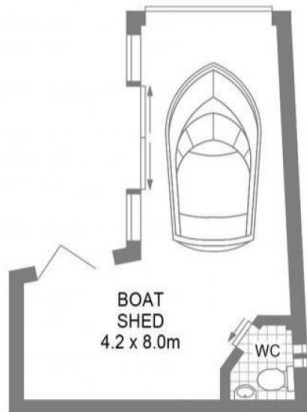
Luke Ingram
9529 3433



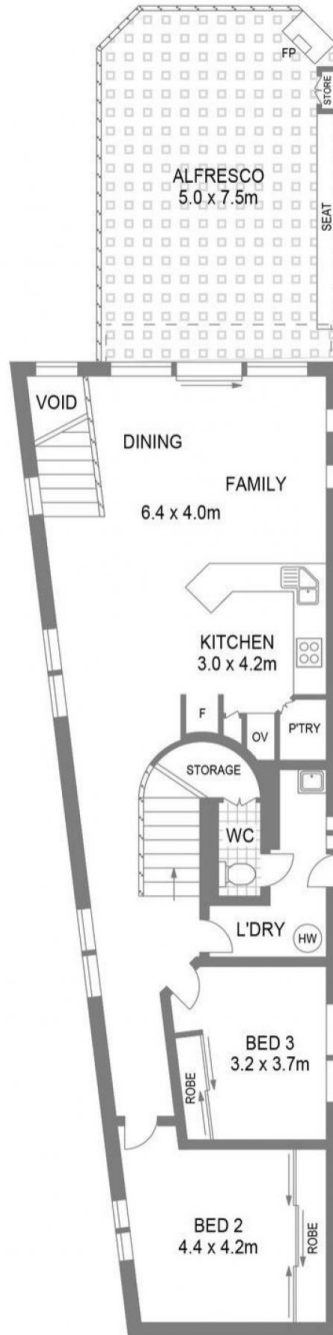
SITE PLAN



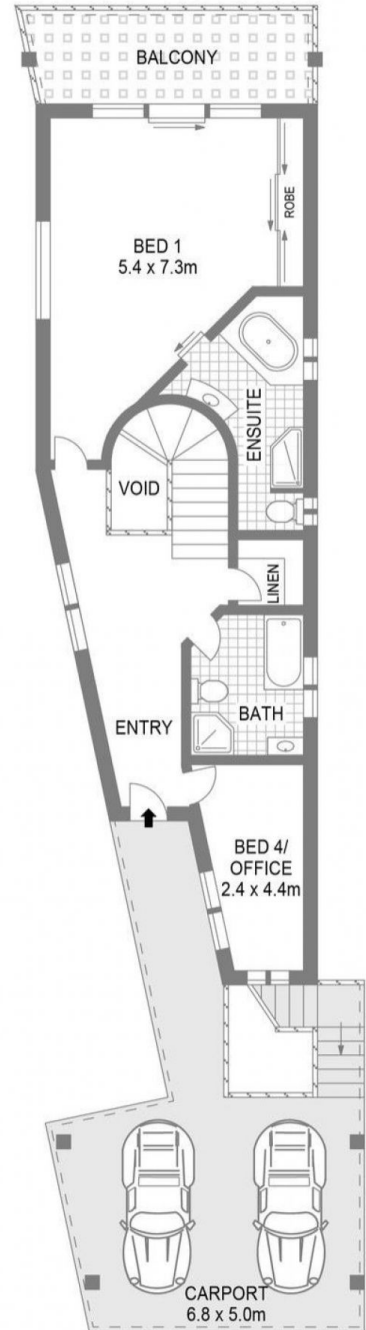
LOWER GROUND LEVEL



BOAT SHED
4.2 x 8.0m



LEVEL ONE



ENTRY LEVEL

64 Alkaringa Road

GyMEA Bay

Scale in metres.
Indicative only. All information contained herein is obtained from sources we believe to be accurate.
We cannot guarantee its accuracy. Interested persons should make their own enquiries.