



499 The Boulevarde (dead End Side) Kirrawee NSW

4 3 2

Situated towards the end of a dead-end street this immaculate turn-key home blends high-end living with functional entertaining, showcasing manicured gardens and a distinctive architectural style. As you step inside, you are greeted by sophisticated interiors and premium finishes that set the tone for the entire home. The open plan kitchen, living, and dining area features expansive floor-to-ceiling windows that frame the sparkling inground pool, seamlessly extending to the alfresco entertaining area, complete with a built-in BBQ and bar fridge. The thoughtfully designed floorplan includes a convenient ground-floor bedroom with access to a full bathroom, ideal for downsizers or growing families. Crafted with precision, this home strikes the perfect balance between comfort and luxury, ready for you to move in and enjoy.

[For full version visit the website](https://www.mattblakproperty.com.au/81267)

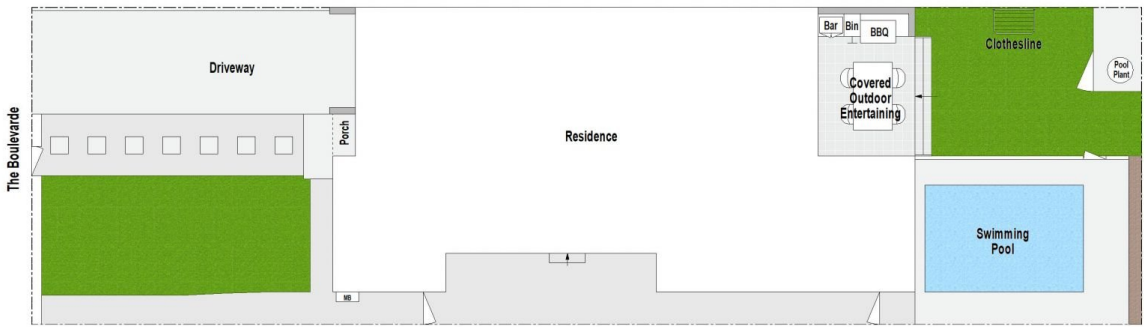
Type : Semi Detached
Price : Auction
Land Size : 329.9 sqm
View : <https://www.mattblakproperty.com.au/81267>
 51



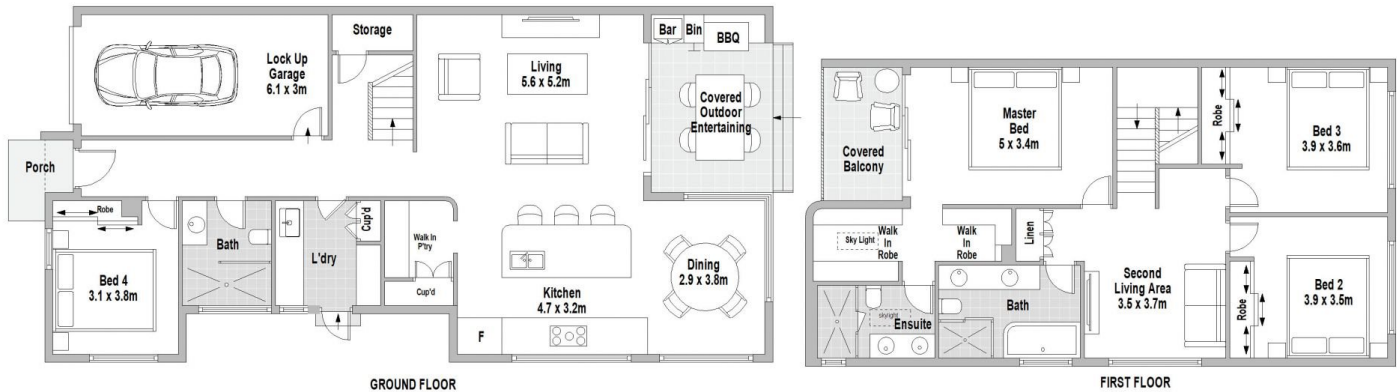
Blake Spooner
9529 3433



Cameron Mattison
9529 3433



SITE PLAN (NOT TO SCALE)



GROUND FLOOR

FIRST FLOOR



499 The Boulevard, Kirrawee

Scale in metres. Indicative only. Dimensions are approximate. All information contained herein is gathered from sources we believe to be reliable. However we cannot guarantee its accuracy and interested persons should rely on their own enquiries.

