



2/96 Kingsway Woollooware NSW

2 2 2

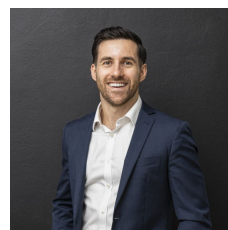
Perfectly situated in a small complex of four, bordering Cronulla and Woollooware, you'll love the convenience of nearby cafes, train station, and beaches.

Whether you're starting a family, seeking a low-maintenance lifestyle, or making a smart investment, this sunlit two-bedroom townhouse is ideal.

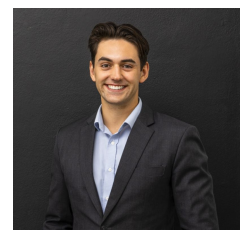
- Open-plan kitchen with dishwasher and ample cupboard space
- Two large bedrooms with built-in robes and ceiling fans
- Two renovated bathrooms, including an ensuite off the main bedroom
- Spacious lounge and dining with air conditioning that flows out to the large courtyard
- Large internal laundry with additional toilet
- Sunny rear courtyard for outdoor entertaining, with garden

[For full version visit the website](https://www.mattblakproperty.com.au/81256)

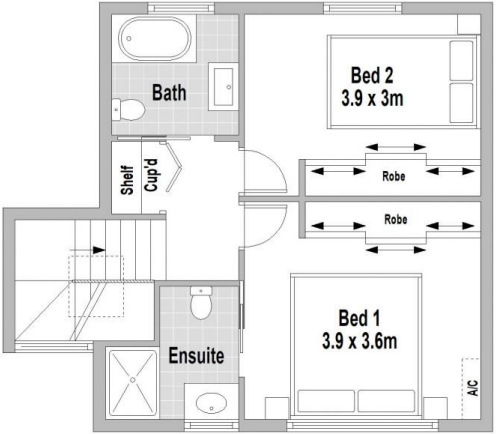
Type : Townhouse
Price : Private Negotiation
Land Size : 192 sqm
View : <https://www.mattblakproperty.com.au/81256>
 25



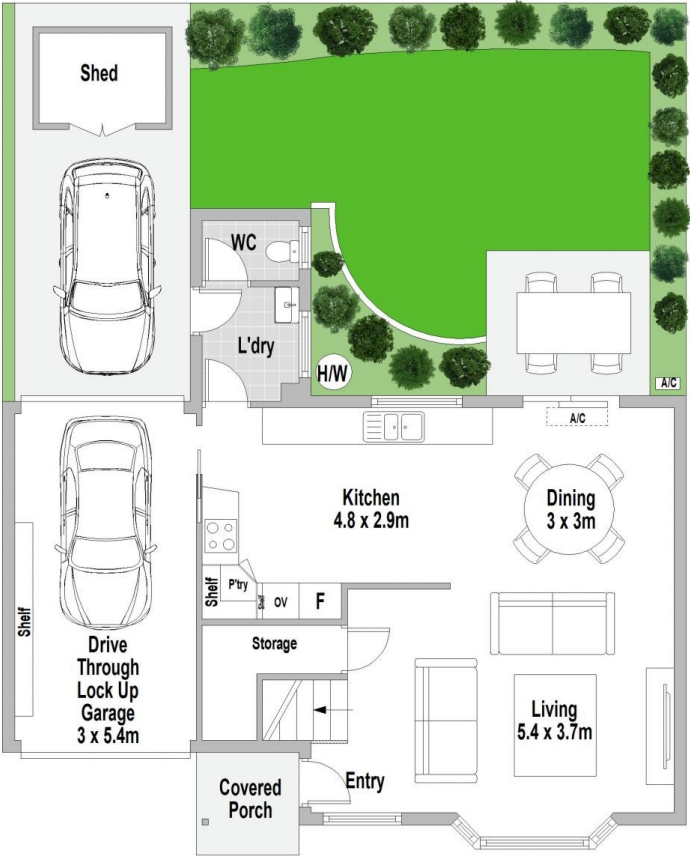
Adam Sharp
9529 3433



Declan Fallah
9529 3433



FIRST FLOOR



GROUND FLOOR

Kingsway

2/96 Kingsway, Woollooware



Scale in metres. Indicative only. Dimensions are approximate. All information contained herein is gathered from sources we believe to be reliable. However we cannot guarantee its accuracy and interested persons should rely on their own enquiries.