

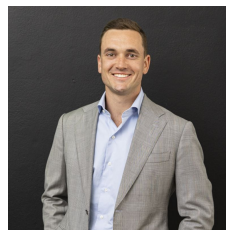
162 National Avenue Loftus NSW

3 2 2

This modern, spacious and comfortable home in the heart of Loftus combines practicality and convenience with an adaptable floor plan, perfect for families and downsizers alike. The well-thought-out design includes a ground-floor bedroom with an ensuite and a multi-purpose studio with direct access to a double lock-up garage. The open-plan kitchen and living area flows effortlessly to a separate dining area and out to a spacious and sunny outdoor entertaining area enjoying a northern aspect.

- Neat and tidy kitchen featuring a skylight above the rangehood and ample storage
- Bright and comfortable living and dining area with modern timber flooring throughout
- Enjoy a private backyard with a low-maintenance lawn and entertaining area
- Ground floor master bedroom with its own ensuite, built-in

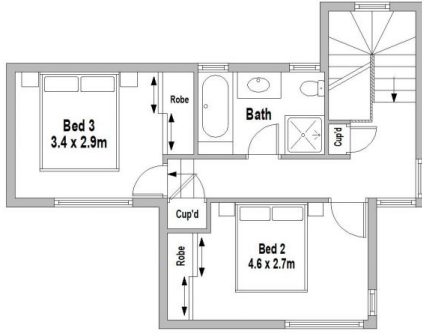
Price : \$1,450,000 - \$1,550,000 | Private Negotiation
View : <https://www.mattblakproperty.com.au/8105611>



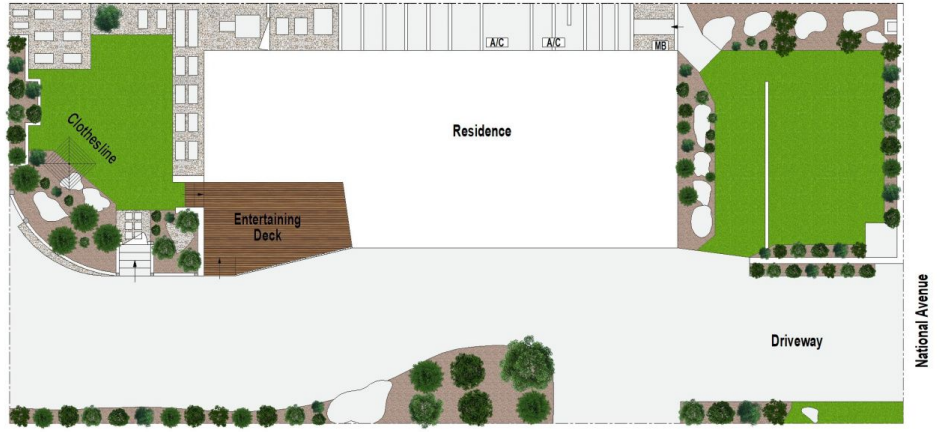
Blake Spooner
9529 3433



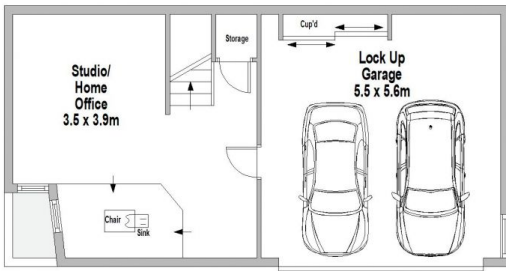
Cameron Mattison
9529 3433



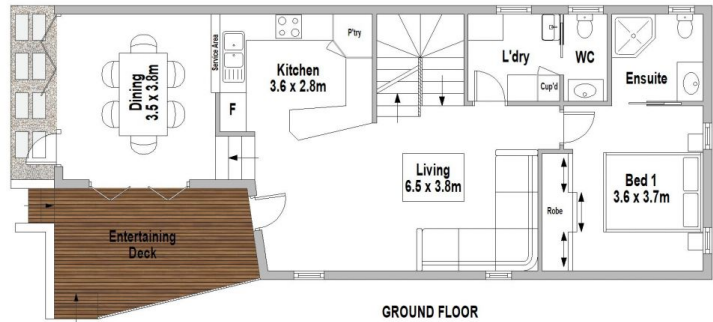
FIRST FLOOR



SITE PLAN (NOT TO SCALE)



LOWER GROUND FLOOR



GROUND FLOOR



162 National Avenue, Loftus

Scale in metres. Indicative only. Dimensions are approximate. All information contained herein is gathered from sources we believe to be reliable. However we cannot guarantee its accuracy and interested persons should rely on their own enquiries.