



31/4-10 Miranda Road Miranda NSW

2 1 1

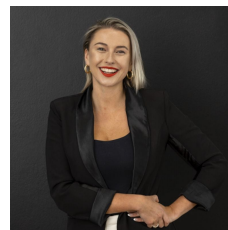
With its sunny outlook this apartment is the perfect place to call home. Set at the rear of a maintained secure complex, the property is only 900m from the iconic restaurant and shopping precinct of Westfield and Miranda Station.

Type : Apartment

View : <https://www.mattblakproperty.com.au/8102779>

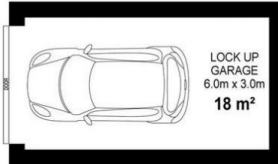
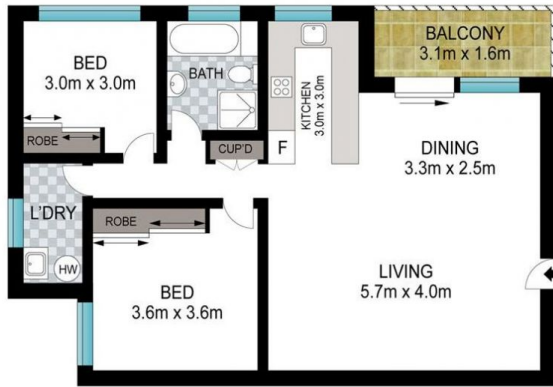
HIGHLIGHTS:

- ? Huge open plan lounge and dining room
- ? Peaceful sun filled balcony overlooking the gardens
- ? Modern kitchen with plenty of storage and bench space
- ? Both bedrooms are good sizes with built-in robes
- ? Bathroom with natural light and a separate bath and shower
- ? Internal laundry and lock up garage (prone to flooding in torrential rain)



Jasmine Quirk
9529 3433

[For full version visit the website](https://www.mattblakproperty.com.au)



Scale in metres. Indicative only. Dimensions are approximate. All information contained herein is gathered from sources we believe to be reliable. However, we cannot guarantee its accuracy and interested persons should rely on their own enquiries.

INT: 82 m²
TOTAL: 100 m²

31/4-10 Miranda Road, Miranda