



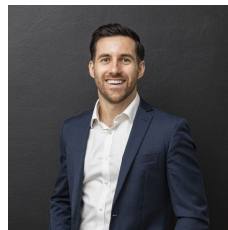
114A North West Arm Road Gymea NSW

4 🏠 3 🚗 3 🚗

Peacefully positioned overlooking Dents Creek, this well-maintained family home offers an unrivalled lifestyle and a rare sense of seclusion. Designed to exceed all expectations of family living, this remarkable entertainer's home enjoys multiple living areas, across a spacious floorplan suited to the largest of families. This home features a private yet convenient location positioned close to the Royal National Park, Gymea village, schools and transport.

- Large proportions complemented by high ceilings with an abundance of natural light
- Open plan living areas flowing seamlessly out to a large balcony ideal for entertaining
- Brand new Island kitchen includes quality appliances and plenty of bench and cupboard space
- Sparkling in-ground pool enjoys an abundance of sun and

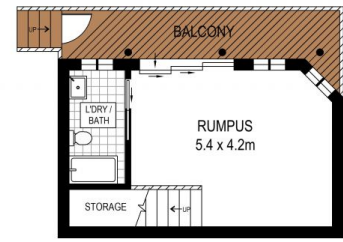
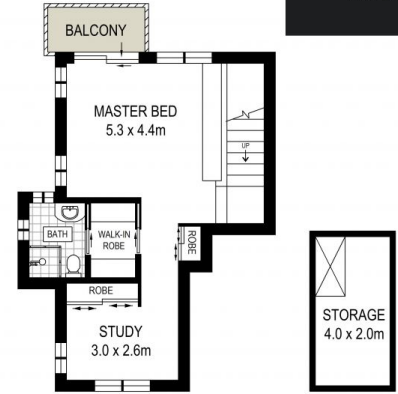
Price : Auction | Unless Sold Prior
Land Size : 731 sqm
View : <https://www.mattblakproperty.com.au/81025>
 96



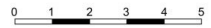
Adam Sharp
9529 3433



Matthew Johnston
9529 3433



ADDRESS:
114A North West Arm Road, Gymea



DISCLAIMER: THIS IS FOR ILLUSTRATIVE PURPOSES ONLY, ALL DIMENSIONS ARE APPROXIMATE AND IT DOES NOT CONSTITUTE PART OF ANY LEGAL DOCUMENTS.