



28 Carter Crescent Gymea Bay NSW

4 🏠 2 🚗 3 🚗

This meticulously designed family-friendly residence is ideally situated within an exceptionally sought-after quiet and leafy cul-de-sac, only a short stroll from Gymea Village and station, Gymea Bay Primary School and Gymea Baths. It is also within the Kirrawee High School catchment area.

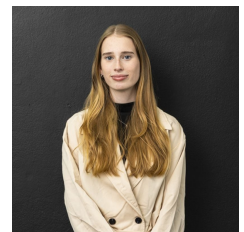
View : <https://www.mattblakproperty.com.au/8051595>

HIGHLIGHTS:

- The home offers an unparalleled sense of spaciousness
- Expansive outdoor entertaining area with swimming pool and level lawns
- Four generously sized bedrooms, two living areas and beautiful bathrooms
- Stunning kitchen with stone bench tops and large island
- Large sliding doors seamlessly connect the kitchen, living, dining, and outdoor spaces, perfect for entertaining



Jasmine Quirk
9529 3433



Sophie Gardner
9529 3433