



**22b Forest Road Yowie Bay NSW**

4 🚗 3 🚗 2 🚗

A true Architectural masterpiece! This brand-new residence is inspirational, and the attention to detail is second to none. Neutral palette and casual sophistication enhances each room. Its savvy layout features open plan living and dining area's, a butler's pantry for the designer kitchen and an alfresco space with built in barbeque, complimented by a sparking in-ground swimming pool and a level grassed yard perfect for children and pets. Positioned in a highly sought-after neighborhood with the ability to walk to Miranda Westfield, cafes and schools, with childcare, parks and transport at your door

**Price** : \$ 2,330,000

**View** : <https://www.mattblakproperty.com.au/8032702>

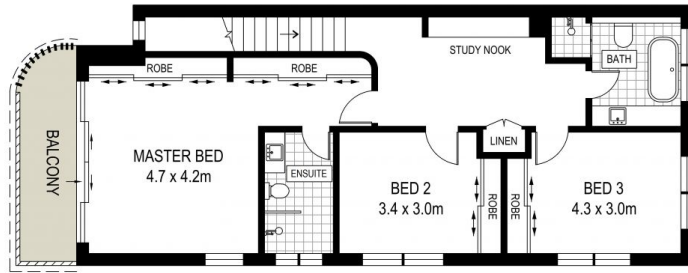


**Matthew Johnston**  
9529 3433

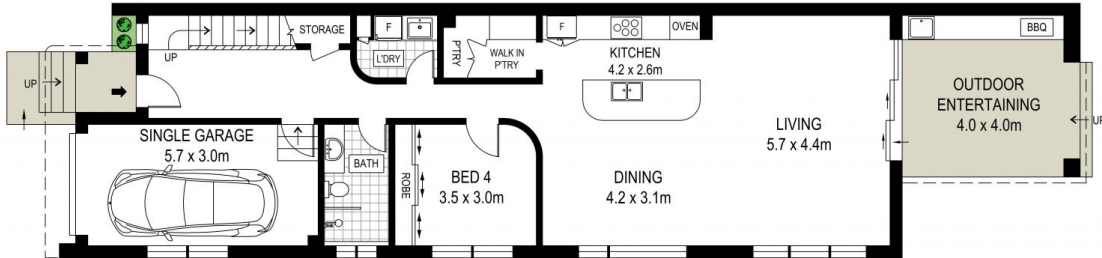


**Blake Spooner**  
9529 3433

- Abundance of natural light complimented by high ceilings and neutral palette of quality finishes
- Seamless indoor-outdoor flow from your spacious living areas to your poolside alfresco entertaining area
- Spacious kitchen with butler's pantry, Smeg appliances



FIRST FLOOR



GROUND FLOOR



SITE PLAN (NOT TO SCALE)



ADDRESS:  
22B Forest Road, Yowie Bay



DISCLAIMER: THIS IS FOR ILLUSTRATIVE PURPOSES ONLY, ALL DIMENSIONS ARE APPROXIMATE AND IT DOES NOT CONSTITUTE PART OF ANY LEGAL DOCUMENTS.