

14/474 - 482 Kingsway Miranda NSW

2 **1** **2**

This stunning, top floor apartment boasts light and large interiors. Located just moments to Miranda Westfield's shopping, dining and leisure choices, this apartment offers the ultimate chic and convenient lifestyle.

HIGHLIGHTS:

- Open plan layout offers spacious separate lounge and dining
- Large balcony enjoys a sunny and private aspect
- Stunning kitchen with breakfast bar and dishwasher
- Two great size bedrooms both with built-in wardrobes
- Internal laundry
- Secure double length lock-up garage
- East facing position in a very well-maintained security complex

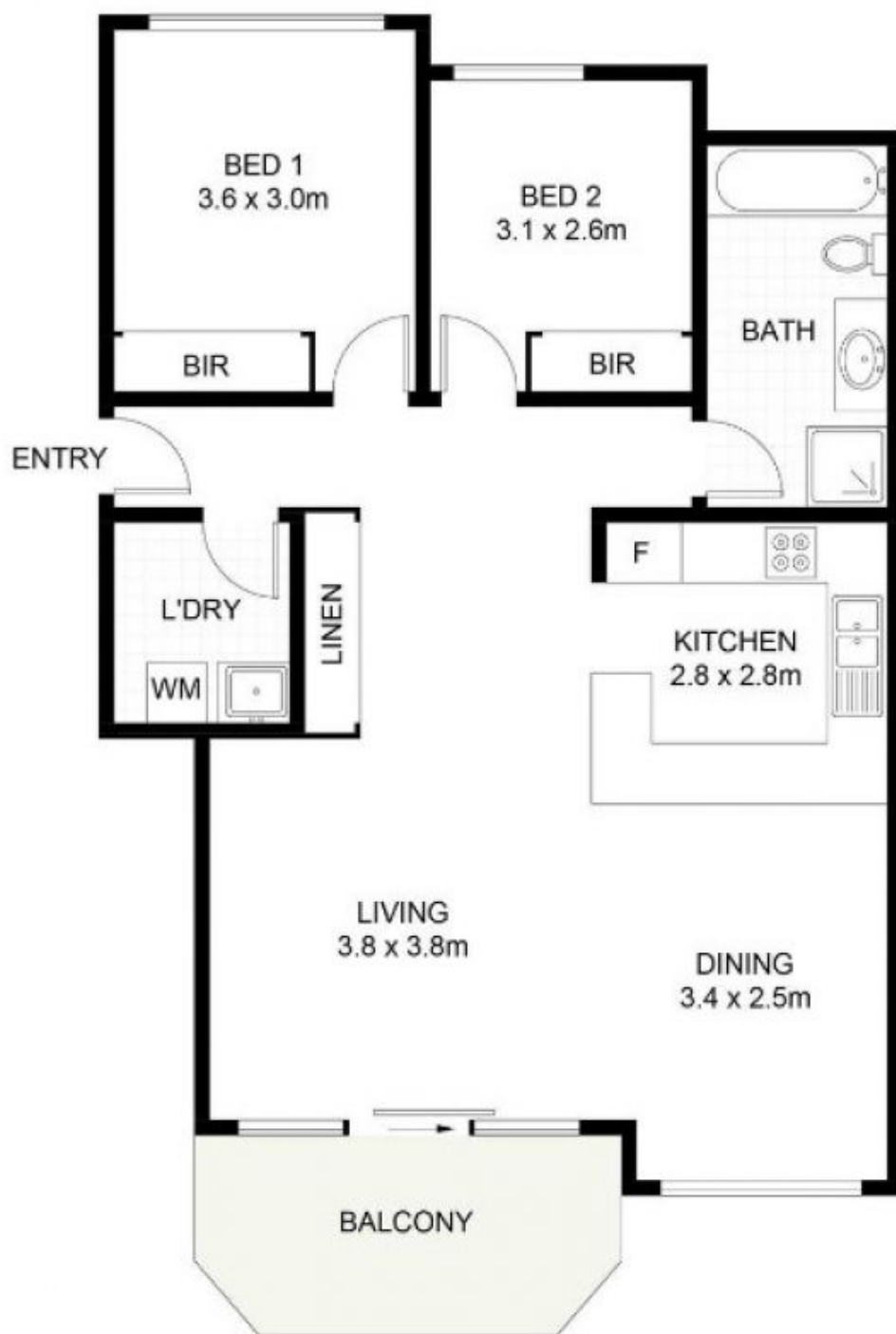
Type : Apartment

View : <https://www.mattblakproperty.com.au/8029204>



Jasmine Quirk
9529 3433

[For full version visit the website](https://www.mattblakproperty.com.au)



(NOT SHOWN IN ACTUAL LOCATION / ORIENTATION)



14/474 Kingsway, Miranda

Scale in metres. Indicative only. Dimensions are approximate. All information contained herein is gathered from sources we believe to be reliable. However, we cannot guarantee its accuracy and interested persons should rely on their own enquiries.