



162A National Avenue Loftus NSW

3 2 2

Welcome to this stunning, modern single-level residence in the heart of Loftus, where contemporary design meets everyday comfort. This 3-bedroom open plan home offers a seamless blend of practicality and convenience, perfect for families and downsizers alike. Situated in a serene position and with seamless flow from the living, dining to the outdoor area emphasizing the sunny aspect and ready to move in appeal. With only stairs from the garage and into the home enjoy all your living on one open level.

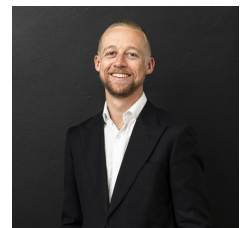
- The heart of this home is its expansive open plan living area, seamlessly integrating the living room, dining area, and kitchen. Perfect for entertaining or enjoying quality family time, this space is filled with natural light and offers flexibility for any lifestyle

[For full version visit the website](https://www.mattblakproperty.com.au/80255)

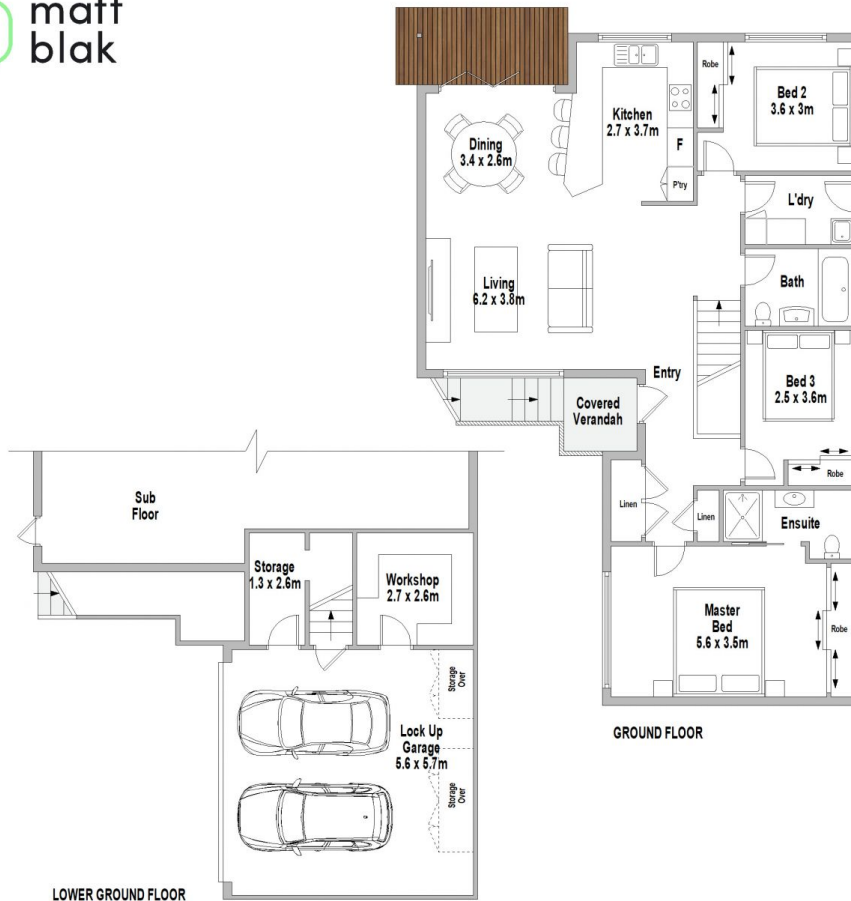
Type : House
Price : \$ 1,445,000
Land Size : 280 sqm
View : <https://www.mattblakproperty.com.au/80255>
13



Blake Spooner
9529 3433

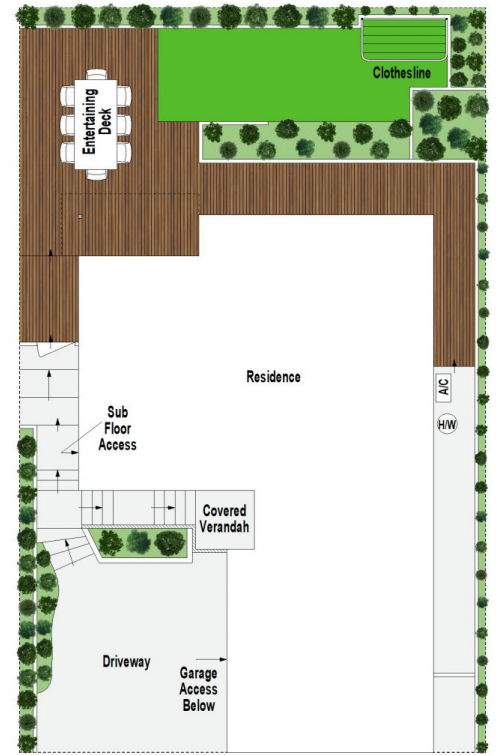


Cameron Mattison
9529 3433



LOWER GROUND FLOOR

GROUND FLOOR



SITE PLAN (NOT TO SCALE)

162A National Avenue, Loftus

Scale in metres. Indicative only. Dimensions are approximate. All information contained herein is gathered from sources we believe to be reliable. However we cannot guarantee its accuracy and interested persons should rely on their own enquiries.