

## 149B Forest Road Gymea NSW

5 3 2

This meticulously designed family-friendly residence is ideally situated within an exceptionally sought-after location, only a short stroll from Gymea Village and station, Gymea Bay Primary School and Gymea Baths.

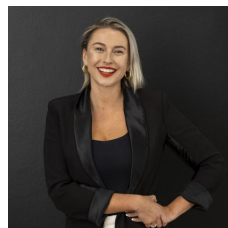
### HIGHLIGHTS:

- Large family kitchen with ample storage and large island bench
- Open living area flowing into undercover entertaining alfresco
- Grassed level yard perfect for kids
- All bedrooms featuring built-in robes and the main with a ensuite
- The main bathroom features a freestanding bath, spacious shower

[For full version visit the website](https://www.mattblakproperty.com.au/7956540)

**Type** : Semi Detached

**View** : <https://www.mattblakproperty.com.au/7956540>



**Jasmine Quirk**  
9529 3433



**Hannah Coughlan**  
95293343