



307/11 Mitchell Avenue Jannali NSW

1 1 1

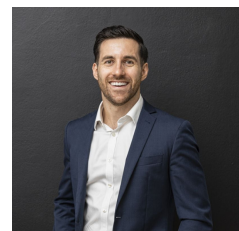
Located in the heart of Jannali, this spacious and meticulously designed residence offers a lifestyle of comfort and luxury. Showcasing open interiors and quality finishes throughout, this modern apartment captures the best of low-maintenance living.

- Open plan living and dining with floor-to-ceiling sliding doors leading to the spacious, north facing entertainer's balcony with city views
- Modern kitchen with stone benchtops, quality integrated appliances and gas cooking
- Spacious bedroom with built in wardrobe and access to balcony
- Stunning bathroom with quality fixtures and fittings
- Basement car space with separate storage cage
- The complex provides a large communal undercover BBQ area and a private landscaped grassy reserve

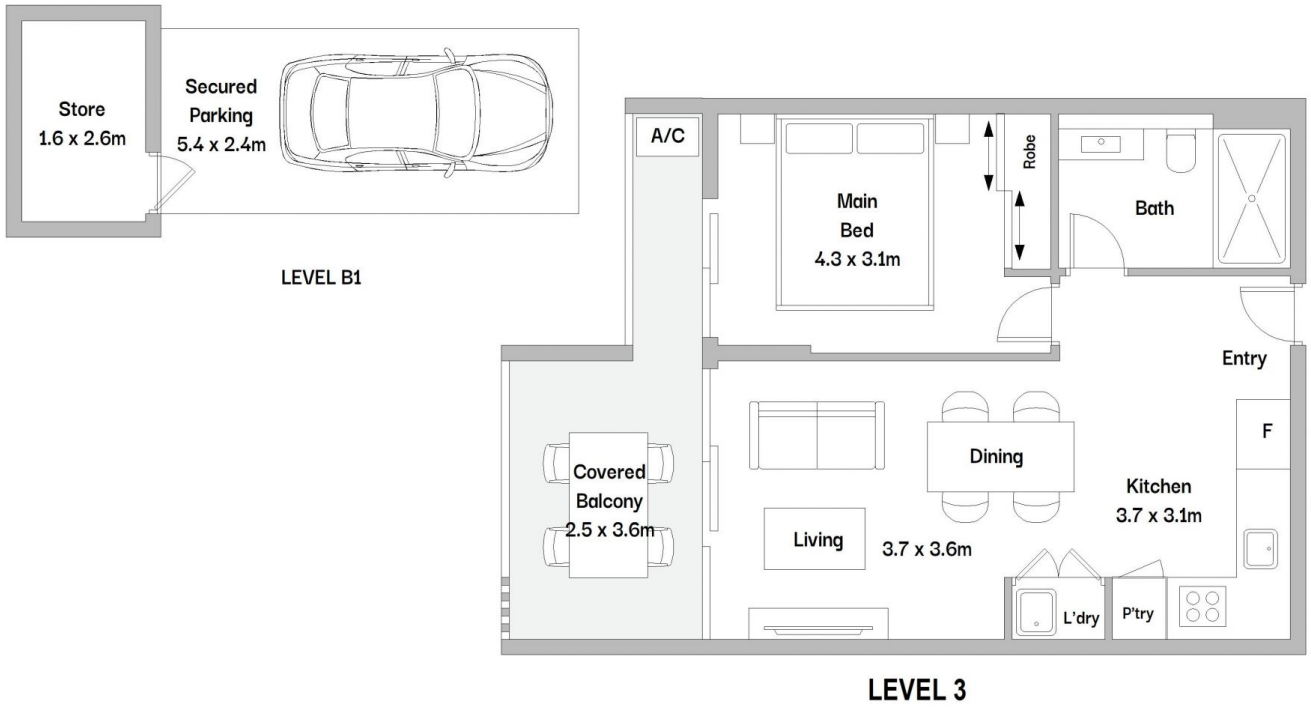
Building Size : 82 sqm
View : <https://www.mattblakproperty.com.au/7933854>



Cameron Mattison
9529 3433



Adam Sharp
9529 3433



307/11 Mitchell Avenue, Jannali

Scale in metres. Indicative only. Dimensions are approximate. All information contained herein is gathered from sources we believe to be reliable. However we cannot guarantee its accuracy and interested persons should rely on their own enquiries.