



7/4-6 Paddison Avenue Gymea NSW

3 2 2

Indulge in contemporary living within the serene suburb of Gymea with this exceptional three-bedroom townhouse. Positioned discreetly towards the rear of the complex, this residence boasts a sought-after north facing aspect, setting the stage for lifestyle characterized by sophistication, comfort and convenience.

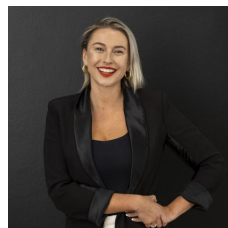
HIGHLIGHTS:

- Open plan living and dining areas provide a versatile space for modern living
- The well-appointed stone kitchen boasts quality appliances and gas cooking
- Three spacious bedrooms with built-in wardrobes, the main with ensuite

[For full version visit the website](https://www.mattblakproperty.com.au/7901203)

Type : Townhouse

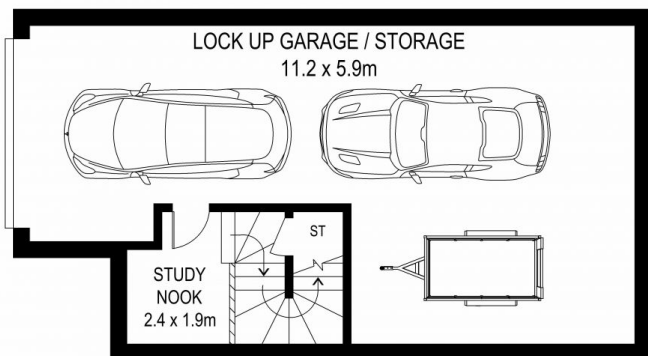
View : <https://www.mattblakproperty.com.au/7901203>



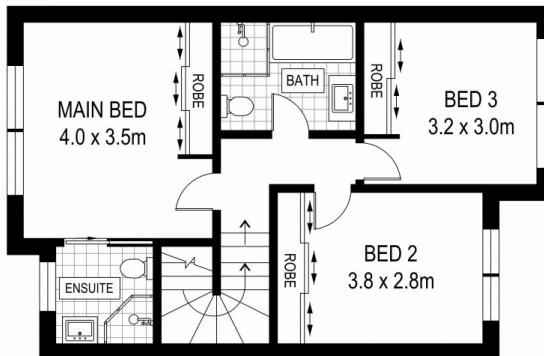
Jasmine Quirk
9529 3433



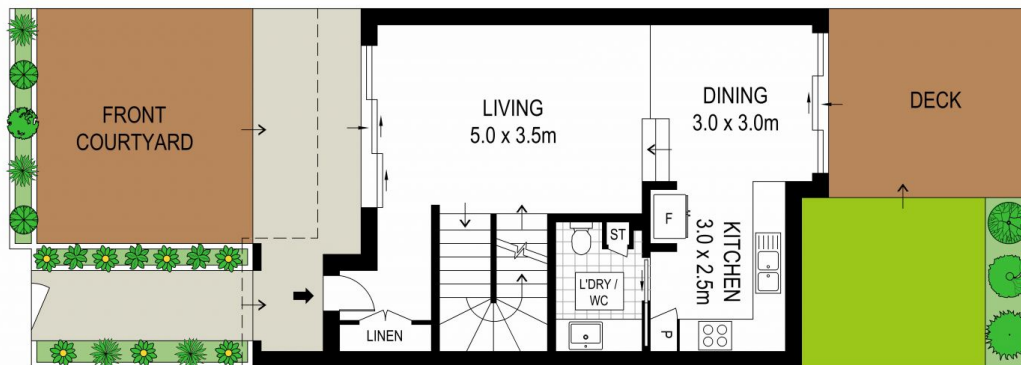
Hannah Coughlan
95293343



LOWER GROUND FLOOR



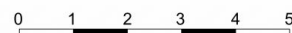
FIRST FLOOR



GROUND FLOOR

ADDRESS:

7 / 4-6 Paddison Avenue, Gymea



DISCLAIMER: THIS IS FOR ILLUSTRATIVE PURPOSES ONLY, ALL DIMENSIONS ARE APPROXIMATE AND IT DOES NOT CONSTITUTE PART OF ANY LEGAL DOCUMENTS.

