



### 8/40 First Avenue Loftus NSW

3 1

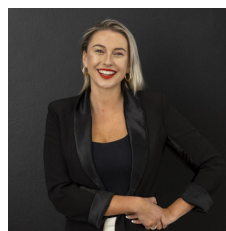
This sun filled townhouse is set in a quiet location and offers a low maintenance lifestyle. Located within walking distance to Sutherland train station, shops and parks, this is the perfect place to call home.

#### HIGHLIGHTS:

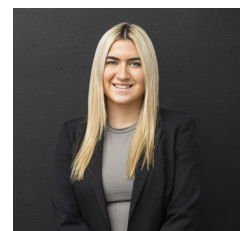
- Open plan light filled lounge room flowing into the dining room
- Good size kitchen with breakfast bar overlooking courtyard
- Bedrooms with built in robes, ceiling fans, main bed with A/C and balcony
- Family bathroom with separate bathtub and shower
- Internal laundry with 2nd toilet
- Low maintenance courtyard with street access, perfect for

**Type** : Townhouse

**View** : <https://www.mattblakproperty.com.au/7827846>

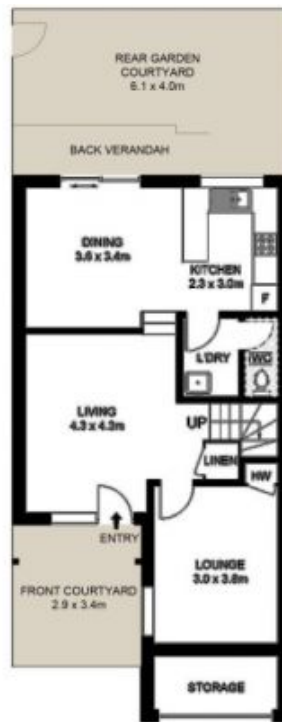


**Jasmine Quirk**  
9529 3433

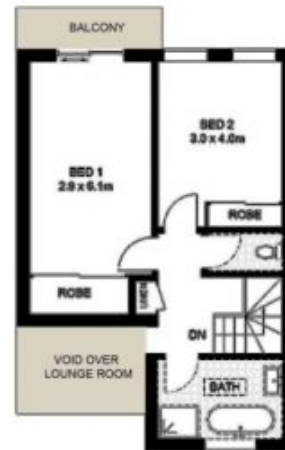


**Hannah Coughlan**  
95293343

[For full version visit the website](https://www.mattblakproperty.com.au)



**GROUND FLOOR**



**FIRST FLOOR**

Scale in metres, indicative only. Dimensions are approximate. All information contained herein is gathered from sources we believe to be reliable. However, we cannot guarantee its accuracy and it should not be relied upon for legal or financial purposes.

**8/40 First Avenue, Loftus**

