



13/10-14 Kingsland Road Bexley NSW

2 1 1

Offering a spacious floorplan with refreshed interiors, this property showcases a seamless flow between the living and dining areas, creating a harmonious connection with the well-appointed kitchen. The residence comprises two generously sized bedrooms, a functional bathroom, and an internal laundry, making it an ideal choice for first-time homebuyers, young families, or investors. Enjoying the added convenience of being just a leisurely stroll away from local cafes, shops, gyms, and transport options. Whether you're a first-time homebuyer, a young family, or an investor, this property combines practicality with contemporary living.

- Featuring an open-plan layout that effortlessly connects the living and dining areas, providing a sense of

[For full version visit the website](https://www.mattblakproperty.com.au/78158)

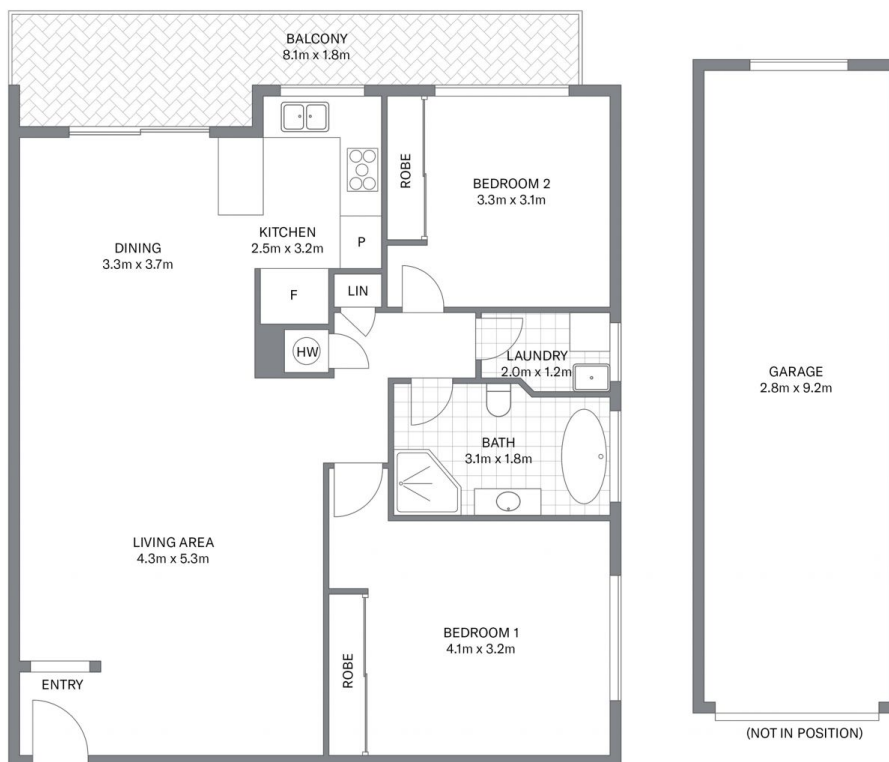
Type : Apartment
Price : \$ 705,000
Land Size : 112 sqm
View : <https://www.mattblakproperty.com.au/78158>
 72



Blake Spooner
9529 3433



Patrick Swanson
9529 3433



13/10-14 Kingsland Road, Bexley

2 1 1

Scale in metres. Indicative only. Dimensions are approximate. All information contained herein is gathered from sources we believe to be reliable. However we cannot guarantee its accuracy and interested persons should rely on their own enquiries.