



7/4-6 Paddison Avenue Gymea NSW

3 2 2

Indulge in contemporary living within the serene suburb of Gymea with this exceptional three-bedroom townhouse. Positioned discreetly towards the rear of the complex, this residence boasts a sought-after north facing aspect, setting the stage for lifestyle characterized by sophistication, comfort and convenience.

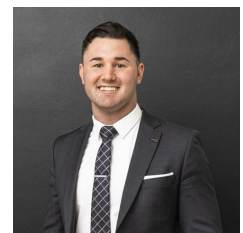
Conveniently located within walking distance of Gymea Shopping Village or Miranda Westfield, this townhouse offers proximity to an array of amenities, including shops, restaurants, schools, parks, and public transport.

- Expansive open plan living and dining areas provide a versatile space for modern living
- Contemporary light filled interiors are accentuated by high

Type : Townhouse
Price : \$ 1,275,000
View : <https://www.mattblakproperty.com.au/7813811>

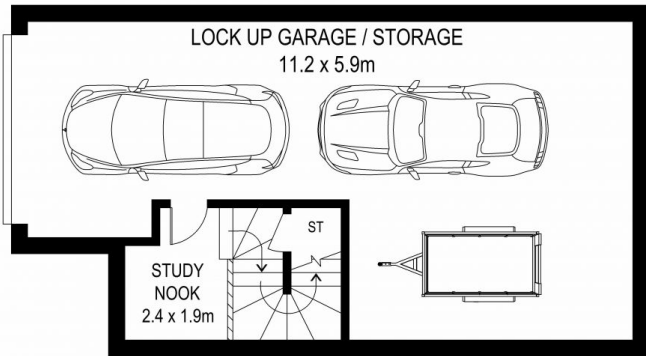


Matthew Johnston
9529 3433

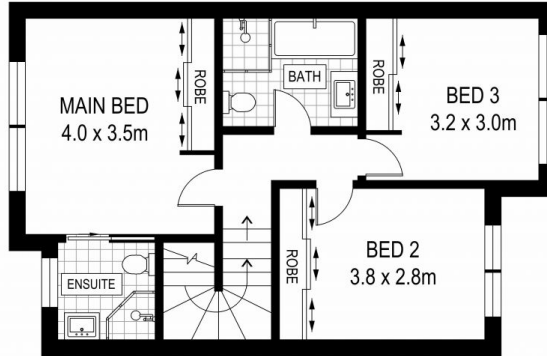


Billy Burke
9529 3433

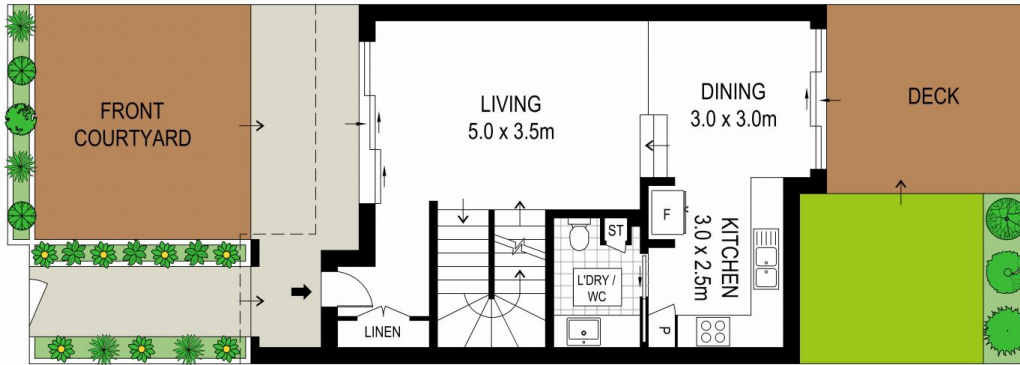
[For full version visit the website](https://www.mattblakproperty.com.au)



LOWER GROUND FLOOR



FIRST FLOOR



GROUND FLOOR



ADDRESS:
7 / 4-6 Paddison Avenue, Gymea



DISCLAIMER: THIS IS FOR ILLUSTRATIVE PURPOSES ONLY, ALL DIMENSIONS ARE APPROXIMATE AND IT DOES NOT CONSTITUTE PART OF ANY LEGAL DOCUMENTS.