



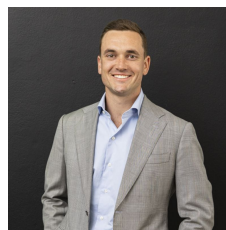
41A Coonong Road Gymea Bay NSW

5 3 2

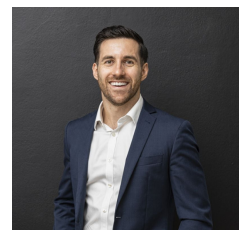
This meticulously designed family-friendly residence is ideally situated within an exceptionally sought-after quiet and leafy cul-de-sac, only a short stroll from Gymea Village and station, Gymea Bay Primary School and Gymea Baths. It is also within the Kirrawee High School catchment area.

The home offers an unparalleled sense of spaciousness and boasts an open-plan layout that can accommodate a large family or those seeking to downsize. The flexible, open-plan design seamlessly extends to an expansive outdoor entertainment area, featuring a generously proportioned deck, swimming pool and extensive lawns. Five generously sized bedrooms, three living areas, and an advantageous northerly orientation, complemented by a butler's pantry, a dedicated driveway, and an exceptionally

Type : Semi Detached
Land Size : 499.1 sqm
View : <https://www.mattblakproperty.com.au/7784819>



Blake Spooner
9529 3433

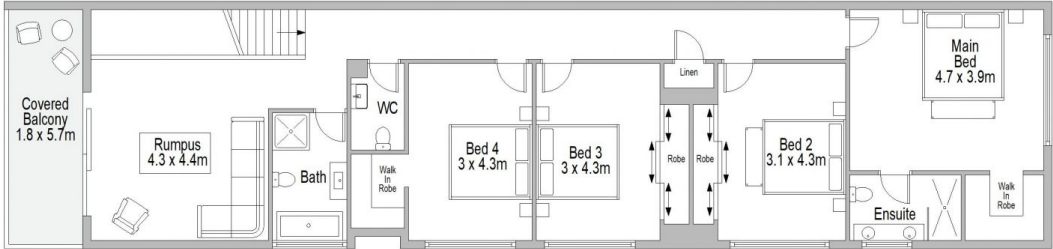


Adam Sharp
9529 3433

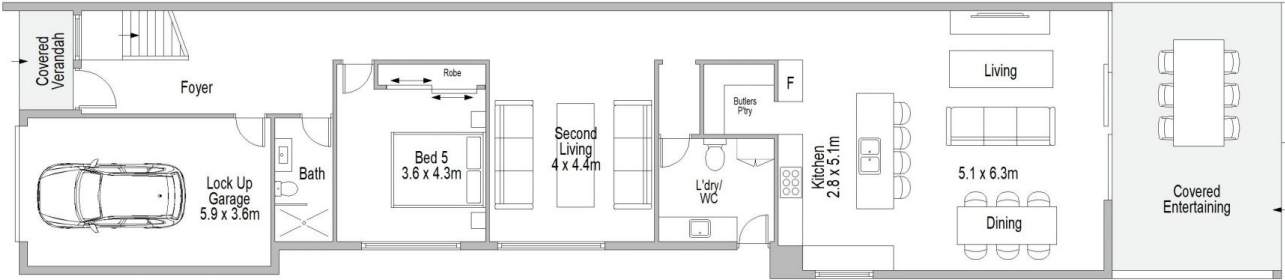
[For full version visit the website](https://www.mattblakproperty.com.au)



SITE PLAN (NOT TO SCALE)



FIRST FLOOR



GROUND FLOOR



41A Coonong Road, Gympie Bay

Scale in metres. Indicative only. Dimensions are approximate. All information contained herein is gathered from sources we believe to be reliable. However we cannot guarantee its accuracy and interested persons should rely on their own enquiries.