



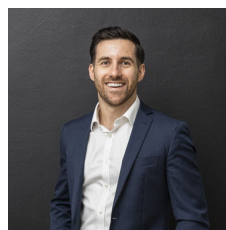
**G06/11-15 Mitchell Avenue Jannali NSW**

3 2 2

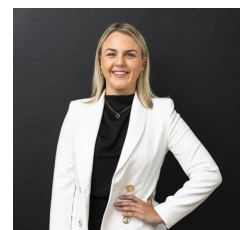
Situated at the heart of Jannali, this residence enjoys convenient level-walk accessibility. The well-designed, spacious layout offers high-quality fixtures and fittings. A private courtyard seamlessly connects the living, dining, and kitchen areas, creating an ideal space for year-round entertaining. Three great-sized bedrooms and an abundance of natural light. Perfectly positioned just a short stroll to cafes, shops, and Jannali train station. Whether you're a downsizer, investor, or a young couple seeking both space, comfort and convenience, this home is a perfect fit.

- Stone kitchen with premium appliances, gas cooktop, sleek cabinetry, and ample counter and storage space
- Three generously proportioned bedrooms all with

**Type** : Apartment  
**Price** : \$ 1,141,000  
**Land Size** : 251 sqm  
**View** : <https://www.mattblakproperty.com.au/7777667>

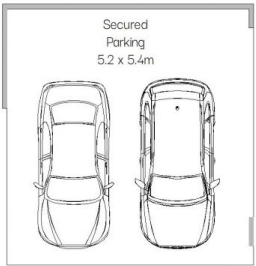


**Adam Sharp**  
9529 3433



**Ellouise Dunn**  
95293343

[For full version visit the website](https://www.mattblakproperty.com.au)



**BASEMENT LEVEL**



**GROUND FLOOR**



**G06/11-15 Mitchell Avenue, Jannali**

Scale in metres. Indicative only. Dimensions are approximate. All information contained herein is gathered from sources we believe to be reliable. However we cannot guarantee its accuracy and interested persons should rely on their own enquiries.