



105 Forest Road Miranda NSW

3 2 2

Sprawling over a sizeable corner plot of 891.6 sqm, with 19.66 m frontage, this sunny north-facing R2 Zoned parcel presents a certainly unique opportunity in a highly central locale. Ideally suited to the discerning buyer seeking to put down roots and craft a truly special family home, or new-build project (Subject to Council Approval).

Offered to the market for the first time, this much-loved residence comprises a spotless, well-presented three bedroom, single-level brick family home positioned in a tightly held location within close proximity to local shops, parklands, and nearby quality schools, with lifestyle waterways and cafés only a short drive away.

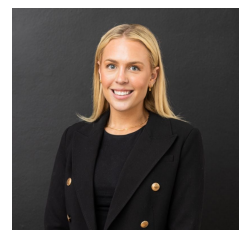
Features include:

[For full version visit the website](https://www.mattblakproperty.com.au/77092)

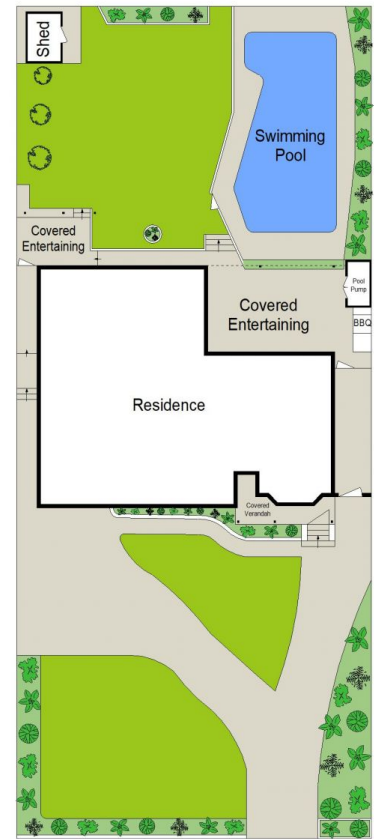
Type : House
Price : \$ 1,791,000
Land Size : 891.6 sqm
View : <https://www.mattblakproperty.com.au/77092>
 12



Patrick Swanson
9529 3433



Madison Long
9529 3433



SITE PLAN (NOT TO SCALE)



0 1 2 3 4 5 METRES.

105 Forest Road, Miranda

3 2 1

Scale in metres. Indicative only. Dimensions are approximate. All information contained herein is gathered from sources we believe to be reliable. However we cannot guarantee its accuracy and interested persons should rely on their own enquiries.

