



75/8-12 Wandella Road Miranda NSW

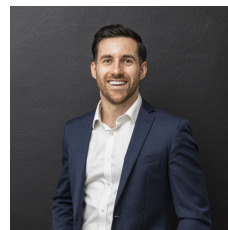
2 2 1

Positioned on the fourth floor of a secure complex with lift and intercom access, this apartment enjoys a spacious floorplan with sun-lit interiors, including the impressive open-plan living and dining zones and flowing to the sunny, covered entertainer's balcony. Neatly presented and centrally located within close proximity to Seymore Shaw Park, local shops, quality schools, Miranda Westfield and transport.

- Split system air-conditioning
- Neat and tidy kitchen with ample cupboard storage
- Two great size bathrooms with floor to ceiling tiles and a separate internal laundry
- Blinds and quality flooring throughout
- Two generously proportioned bedrooms both with built in

[For full version visit the website](https://www.mattblakproperty.com.au/76877)

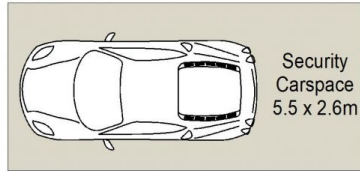
Type : Apartment
Price : \$ 770,000
Land Size : 109 sqm
View : <https://www.mattblakproperty.com.au/76877>
 17



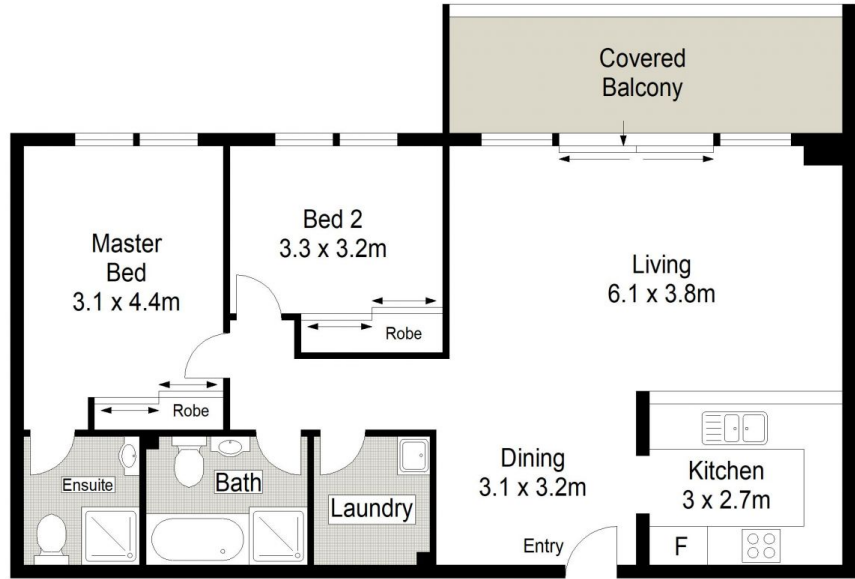
Adam Sharp
9529 3433



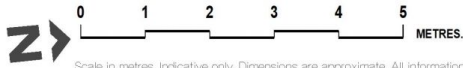
Blake Spooner
9529 3433



LEVEL B2



LEVEL FOUR



75/8-12 Wandella Road, Miranda

Car 2 Stairs 2 Lift 1

Scale in metres. Indicative only. Dimensions are approximate. All information contained herein is gathered from sources we believe to be reliable. However we cannot guarantee its accuracy and interested persons should rely on their own enquiries.

