



11 Karda Place Gymea NSW

3 1 2

This charming and peaceful home sits in an ideal cul-de-sac position. Presenting a classic layout with separate lounge and dining areas, with a north-facing sunny backyard with a swimming pool, this home is not to be missed.

HIGHLIGHTS:

- Positioned close to village shops, vibrant cafes and quality local schools
- Three bedrooms and family bathroom
- Separate living and dining, split system in living
- Kitchen overlooking entertaining area and swimming pool
- Carport and driveway space for multiple cars/boats
- * Pets upon application

Type : House

View : <https://www.mattblakproperty.com.au/7685502>

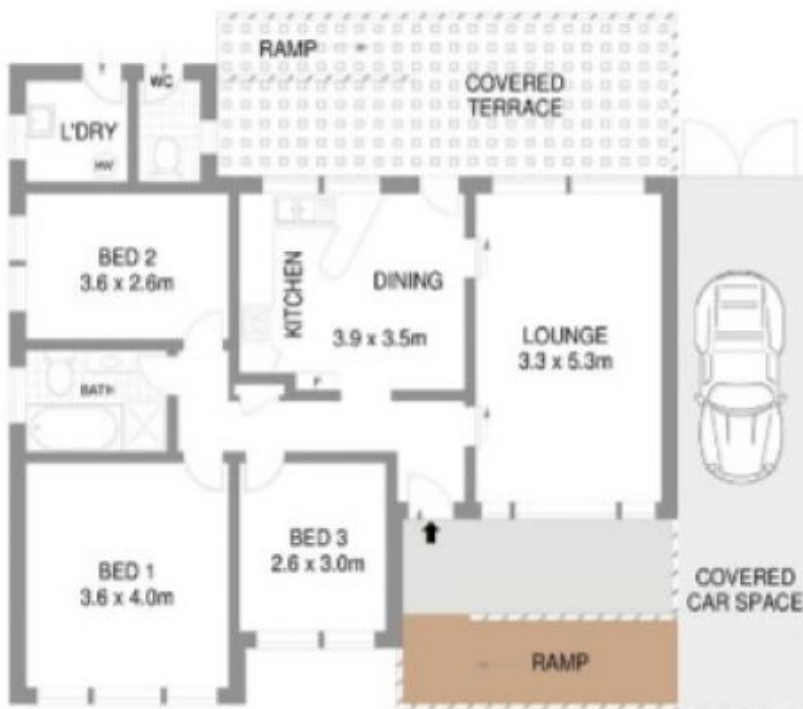


Jasmine Quirk
9529 3433



Hannah Coughlan
95293343

[For full version visit the website](https://www.mattblakproperty.com.au)



GROUND LEVEL



SITE PLAN

11 Karda Place

GyMEA

Scale in metres.
Indicative only. All information contained herein is obtained from sources we believe to be accurate.
We cannot guarantee its accuracy. Interested persons should make their own enquiries.