



901/395 Princes Highway Rockdale NSW

3 2 2

Showcasing stunning city and botany bay views, this newly built apartment is impressive in every way. This three-bedroom residence offers a sizeable open-plan living space and is enlarged by an entertainer's balcony.

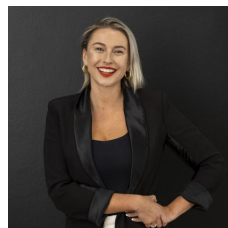
HIGHLIGHTS:

- All three bedrooms with built in wardrobes, main with ensuite
- Elevated district views across to CBD skyline and Botany Bay
- Near-new building with lift access to secure parking space and storage cage
- Internal laundry and sleek integrated storage
- Stone benchtops, mirrored splashback, gas cooking and dishwasher

[For full version visit the website](https://www.mattblakproperty.com.au/7674440)

Type : Apartment

View : <https://www.mattblakproperty.com.au/7674440>



Jasmine Quirk
9529 3433



Hannah Coughlan
95293343