



8/694 Kingsway Gymea NSW

3 2 2

Beautifully presented townhouse, ideally located within walking distance of Gymea village and Miranda Westfield shopping center. This spacious light filled residence offers house-like proportions, open plan living areas, and boasts street frontage with your own private entrance.

- Open living and dining spaces flow effortlessly out to the choice of two separate courtyards
- Newly renovated kitchen with gas cooking and plenty of cupboard space
- Three spacious bedrooms, master with walk in robe
- Two modern bathrooms & laundry
- Internal lift access servicing all three levels, bamboo flooring throughout, plantation shutters, gas heating

[For full version visit the website](https://www.mattblakproperty.com.au/7667482)

Type : Townhouse

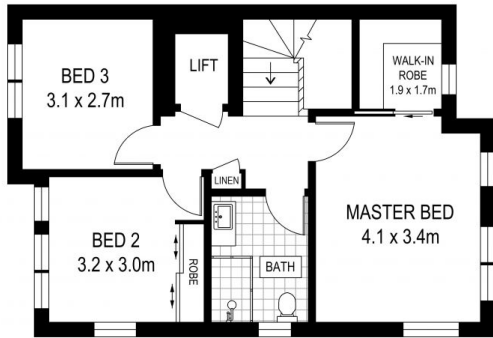
View : <https://www.mattblakproperty.com.au/7667482>



Matthew Johnston
9529 3433



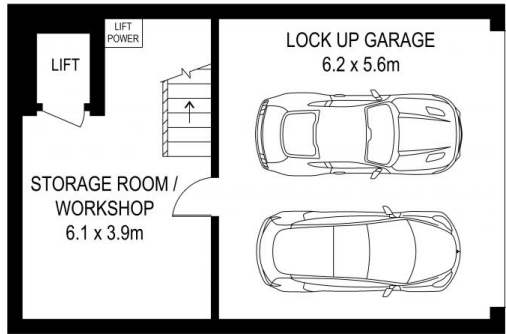
Patrick Swanson
9529 3433



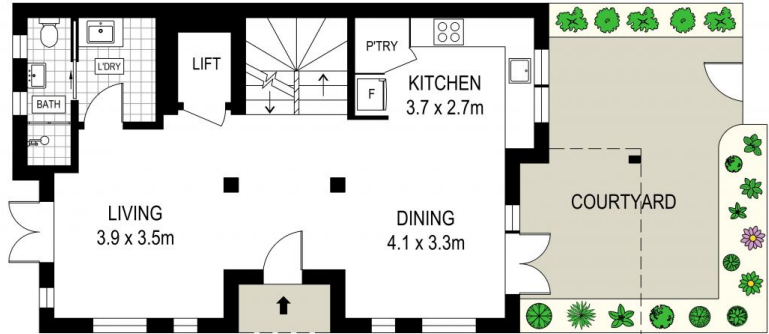
FIRST FLOOR



SITE PLAN (NOT TO SCALE)



LOWER GROUND FLOOR



GROUND FLOOR



ADDRESS:
8/694 Kingsway, Gymea



DISCLAIMER: THIS IS FOR ILLUSTRATIVE PURPOSES ONLY, ALL DIMENSIONS ARE APPROXIMATE AND IT DOES NOT CONSTITUTE PART OF ANY LEGAL DOCUMENTS.