



308 President Avenue Gymea NSW

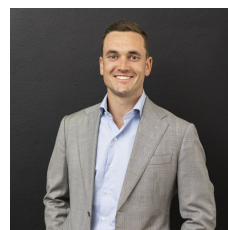
3 2 2

Complete with an inspired renovation throughout, this family sanctuary showcases space, light and style. An ideal single-level layout that has been entirely renovated to the highest of standards with warm, organic textures at its core. Ready to be moved into and enjoyed, the floorplan is designed with effortless family living and entertaining in mind with a free-flowing vibe from inside, to the outdoor entertaining deck and sparkling brand-new in-ground pool beyond.

- Stunning stone kitchen with oversized gas oven, quality Smeg appliances, built in dishwasher and ample storage with shaker cabinetry, entertaining island bench featuring natural stone benchtops
- Comfortable open-plan living and dining zones feature

Type : House

View : <https://www.mattblakproperty.com.au/7626180>

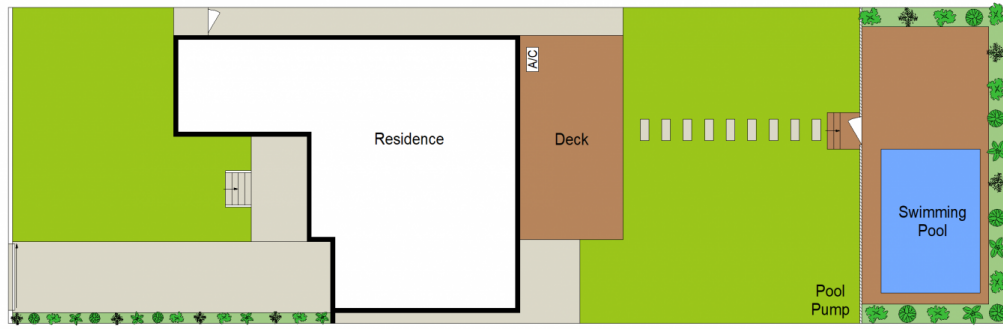


Blake Spooner
9529 3433

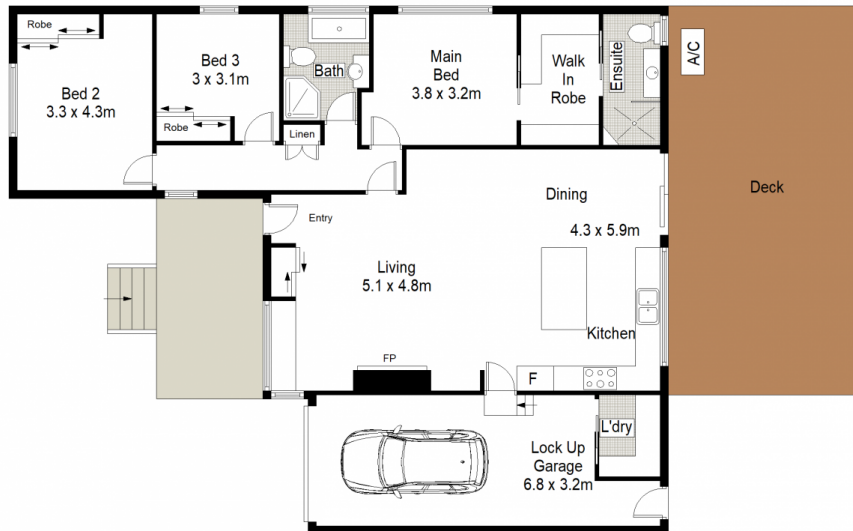


Cameron Mattison
9529 3433

[For full version visit the website](https://www.mattblakproperty.com.au)



SITE PLAN (NOT TO SCALE)



0 1 2 3 4 5 METRES

308 President Avenue, Gymea

3 2 1

Scale in metres. Indicative only. Dimensions are approximate. All information contained herein is gathered from sources we believe to be reliable. However we cannot guarantee its accuracy and interested persons should rely on their own enquiries