

**25/59-63 Ewos Parade Cronulla NSW**

2 1 1

Immersed in the heart of South Cronulla, this light-filled 2 bedroom apartment displays spacious living and neat interiors from within the iconic 'Brentwood' complex. Offering privacy and convenience with level access off Ewos Parade and a large open plan layout the ideal investment, first home or down-sizer opportunity. Situated in a prime position with a short walk to CJ's convenience store, Shelly Park Shop & Park, Cronulla Train Station, Esplanade Walk and all of Cronullas top tier ammenities.

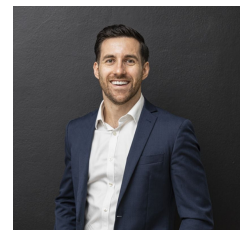
- Well-maintained, secure complex with level lift access from the basement, to the 7th floor position
- Generously sized open plan layout integrates living/dining area and flows outdoors to the secure large balcony
- Updated kitchen with stone benchtops, large island with

[For full version visit the website](https://www.mattblakproperty.com.au/75823)

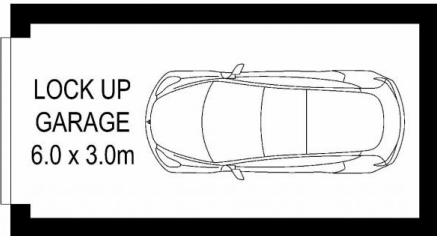
**Type** : Apartment  
**Price** : \$ 1,050,000  
**Land Size** : 114.6 sqm  
**View** : <https://www.mattblakproperty.com.au/75823>  
 78



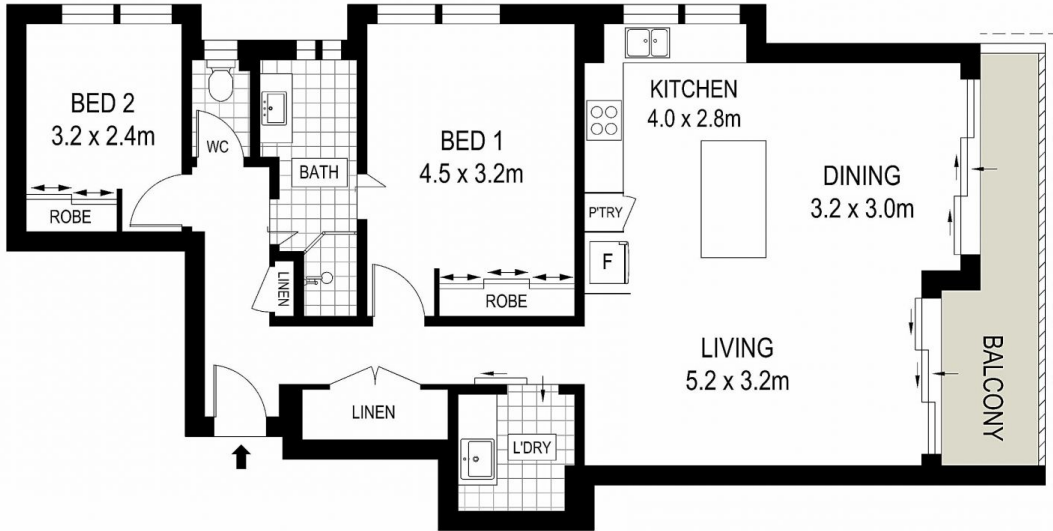
**Blake Spooner**  
9529 3433



**Adam Sharp**  
9529 3433



**GROUND FLOOR**



**LEVEL SEVEN**

ADDRESS:  
25/59-63 Ewos Parade, Cronulla



DISCLAIMER: THIS IS FOR ILLUSTRATIVE PURPOSES ONLY, ALL DIMENSIONS ARE APPROXIMATE AND IT DOES NOT CONSTITUTE PART OF ANY LEGAL DOCUMENTS.