



**1/86-88 Karimbla Road Miranda NSW**

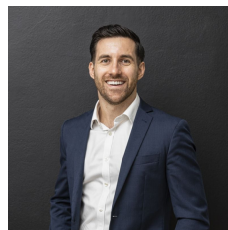
2 1 1

Centrally located in the heart of Miranda with level-walk convenience to Miranda train station and Westfield, this open-plan and updated ground-floor apartment encompasses a welcoming feel with modern interiors, and is perfectly positioned with an easy stroll to local shops, cafes/restaurants and amenities making this property the ideal opportunity for any downsizer, investor or young couple looking for space and lifestyle convenience.

- ? Open plan living and dining zones with easy-care timber style flooring, sliding door access leading to oversized balcony
- ? Immaculate kitchen with plentiful storage and bench space, quality appliances including dishwasher
- ? Renovated bathroom with quality fixtures and fittings,

[For full version visit the website](https://www.mattblakproperty.com.au/75756)

**Type** : Apartment  
**Price** : \$ 650,000  
**Land Size** : 107 sqm  
**View** : <https://www.mattblakproperty.com.au/75756>  
 22



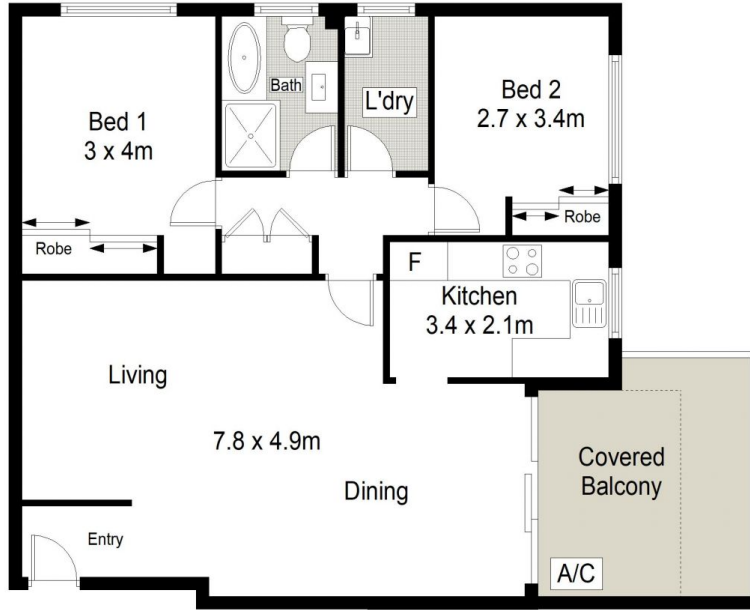
**Adam Sharp**  
9529 3433



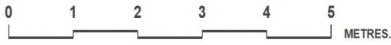
**Blake Spooner**  
9529 3433



**LEVEL B1**



**GROUND FLOOR**



**1/86-88 Karimbla Road, Miranda**

2 1 1

Scale in metres. Indicative only. Dimensions are approximate. All information contained herein is gathered from sources we believe to be reliable. However we cannot guarantee its accuracy and interested persons should rely on their own enquiries.