



1 Copeland Road Engadine NSW

4 3 2

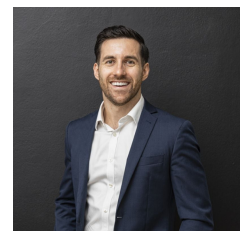
Positioned in a highly sought, central position close to Engadine CBD, this substantial and well-designed home catering to the extended family awakens a relaxed sense of tranquility and peace, welcomed with soaring vaulted ceilings flooding the interiors with natural light. The thoughtfully devised split-level design of this home offers genuinely spacious, and versatile accommodation including sunlit living/dining zones, and private bedrooms, all embraced by relaxed indoor, and outdoor living and entertaining spaces.

Peacefully perched with valley views, this four-bedroom family home delivers an adaptable floorplan, including the impressive living spaces showcasing vaulted ceilings, and access to entertaining balcony with paved entertaining

Type : House
Price : \$ 1,440,000
View : <https://www.mattblakproperty.com.au/7575621>

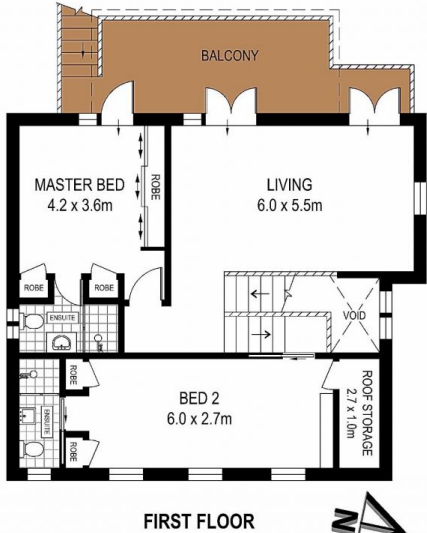
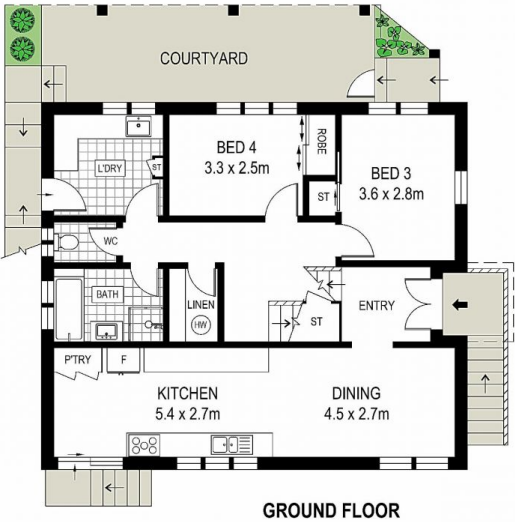
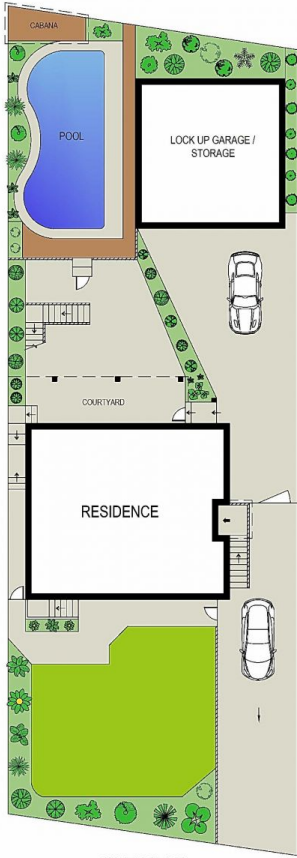


Cameron Mattison
9529 3433

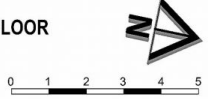


Adam Sharp
9529 3433

[For full version visit the website](https://www.mattblakproperty.com.au)



ADDRESS:
1 Copeland Road Engadine



DISCLAIMER: THIS IS FOR ILLUSTRATIVE PURPOSES ONLY, ALL DIMENSIONS ARE APPROXIMATE AND IT DOES NOT CONSTITUTE PART OF ANY LEGAL DOCUMENTS.