



**211 Woronora Road Engadine NSW**

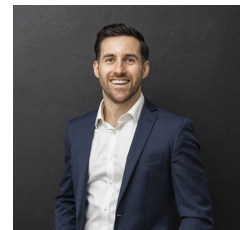
5 🛏 3 🚗 3 🚗

Offered for the first time in more than 60 years, this well-loved, five-bedroom family estate is ready and waiting to welcome a new family into the fold. Set on a sprawling plot of 2,425 m2 encapsulating absolute peace and privacy, the home offers relaxing, picturesque views over the local district and surrounding bushland towards Heathcote National Park and beyond from its elevated position among the treetops. The property offers abundant scope to create your dream home, redevelop or re-imagine the current home (STCA). Ideally located minutes to Engadine village shops, local schools, transport as well as local cafes and amenities, this solid family home will reward foresight and creative vision.

**Type** : House  
**Land Size** : 2425 sqm  
**View** : <https://www.mattblakproperty.com.au/7554920>



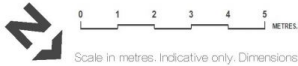
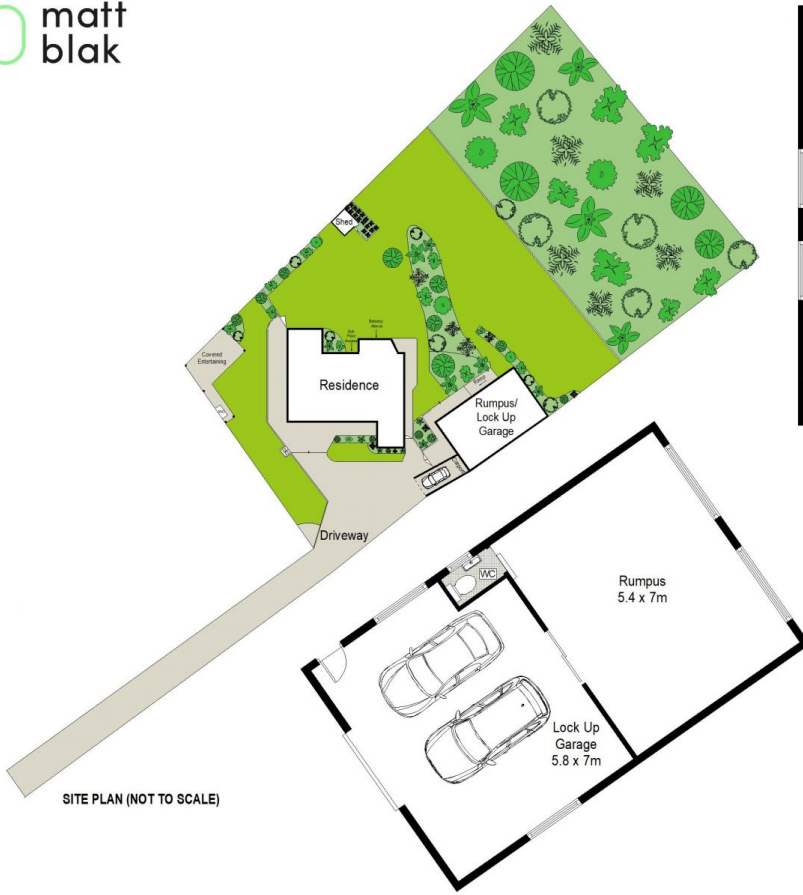
**Cameron Mattison**  
9529 3433



**Adam Sharp**  
9529 3433

Features include:

[For full version visit the website](#)



**211 Woronora Road, Engadine**

5 3 3

Scale in metres. Indicative only. Dimensions are approximate. All information contained herein is gathered from sources we believe to be reliable. However we cannot guarantee its accuracy and interested persons should rely on their own enquiries.