

61 Denman Avenue Woollooware NSW

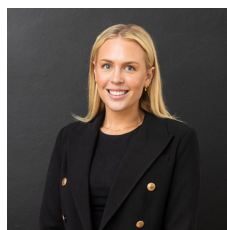
3 1 1

Sprawling over a near level, park-like plot of 1114 sqm* with 18.28 m frontage, this north facing R3 Zoned parcel presents an undoubtedly unique opportunity in a highly sought after position within walking distance to Woollooware Train Station and village shops and cafes. Ideally suited to builders, renovators, developers, and families alike to put down roots and craft a truly special home or project (Subject to Council Approval), properties of this scale within north Woollooware are ultimately rare to come by.

Offered to the market for the first time, this much-loved residence comprises an immaculate original three bedroom, single-level brick family home positioned in a tightly held location within close proximity to local shops,

[For full version visit the website](https://www.mattblakproperty.com.au/75242)

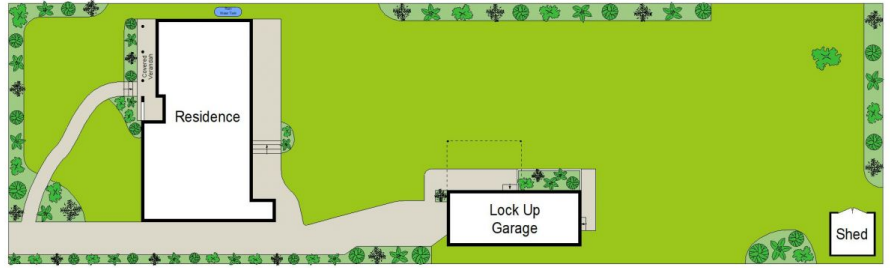
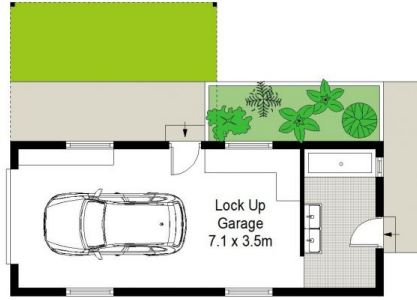
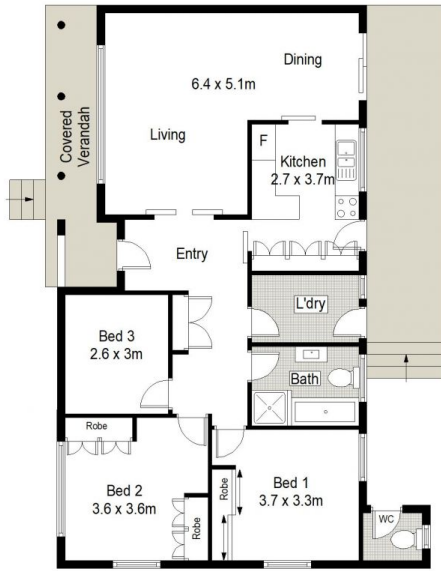
Type : House
Price : \$ 3,050,000
Land Size : 1114 sqm
View : <https://www.mattblakproperty.com.au/75242>
 84



Madison Long
9529 3433



Patrick Swanson
9529 3433



SITE PLAN (NOT TO SCALE)



61 Denman Avenue, Woollooware

3 1 1