



## 105 President Avenue Caringbah NSW

4 2 4

Immaculately presented and beautifully maintained throughout, this dual level family home offers light-filled interiors and enjoys an ideal north facing rear yard bathed in all day sun.

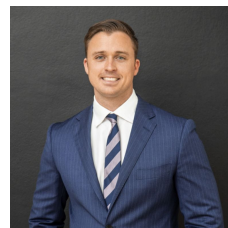
Positioned directly across from the tranquil Camelia Gardens and tea house, moments to popular schools, public transport, Sutherland Hospital and only a short drive to Miranda Westfield.

- Spacious light filled interiors, open plan lounge and dining
- Stone island kitchen overlooking rear yard & pool, separate home office / sunroom

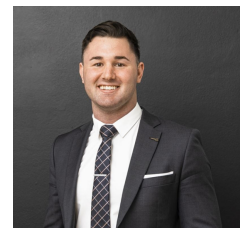
[For full version visit the website](https://www.mattblakproperty.com.au/7512865)

**Type** : House

**View** : <https://www.mattblakproperty.com.au/7512865>



**Matthew Johnston**  
9529 3433



**Billy Burke**  
9529 3433

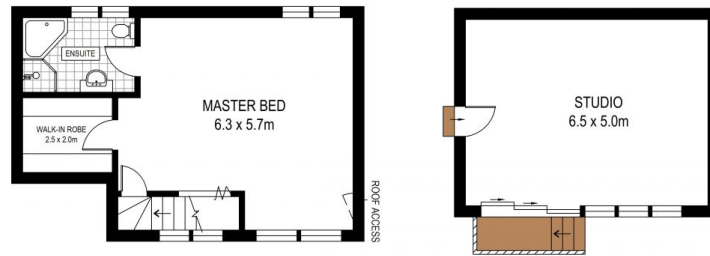


SITE PLAN (NOT TO SCALE)

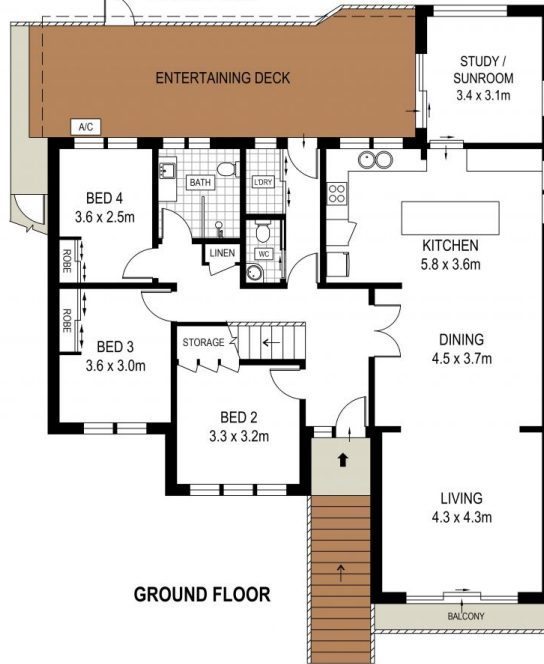
ADDRESS:

105 President Avenue, Caringbah

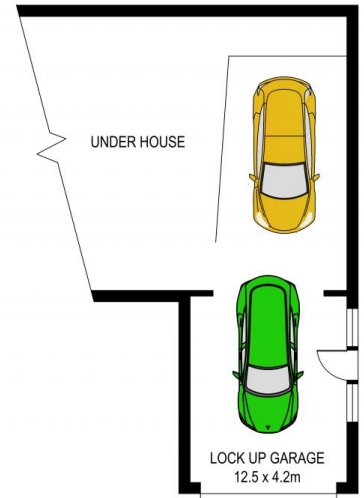
DISCLAIMER: THIS IS FOR ILLUSTRATIVE PURPOSES ONLY, ALL DIMENSIONS ARE APPROXIMATE AND IT DOES NOT CONSTITUTE PART OF ANY LEGAL DOCUMENTS.



FIRST FLOOR



GROUND FLOOR



0 1 2 3 4 5

