

505/1 Brightwell Lane Erskineville NSW

1 1

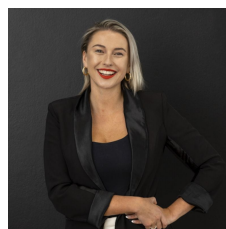
This stunning one-bedroom apartment is located in the 'Luxe' building. Showcasing a stylish and contemporary design, this apartment is set within walking distance to Erskineville village.

HIGHLIGHTS:

- Floor to ceiling sliding doors to the perfect entertaining terrace
- Superb European gas kitchen, stone benchtops, exceptional appliances
- Sleek designer bathroom featuring frameless shower screen
- Security building, internal laundry
- Just 660m walk to Erskineville station
- Pets upon application

Type : Apartment

View : <https://www.mattblakproperty.com.au/7510867>



Jasmine Quirk
9529 3433

[For full version visit the website](https://www.mattblakproperty.com.au)