



**26/10 Robertson Street Sutherland NSW**

2 🛏 2 🚿 2 🚗

Positioned on the sixth floor of the contemporary Banksia complex, this oversized apartment boasts modern and light-filled interiors that showcase stunning views to the city. Central convenient location with only a stone's throw away from an array of local restaurants, cafes, shops, and public transport making it an exceptional opportunity for prospective first home buyers, investors, and downsizers alike.

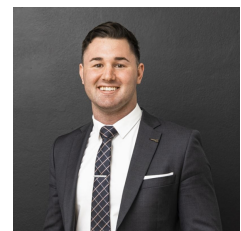
- Open plan living and dining space flows seamlessly out to large north facing balcony

- Two spacious bedrooms with built in wardrobes, main with ensuite

**Type** : Apartment  
**Price** : \$ 835,000  
**View** : <https://www.mattblakproperty.com.au/7440947>

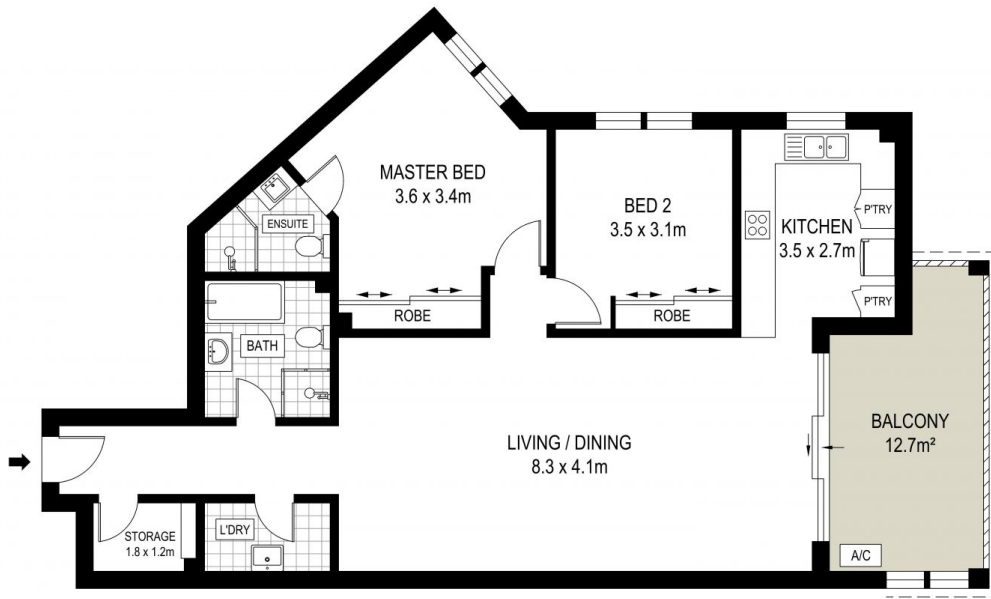


**Matthew Johnston**  
9529 3433

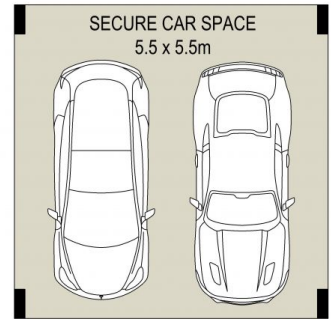


**Billy Burke**  
9529 3433

[For full version visit the website](https://www.mattblakproperty.com.au)

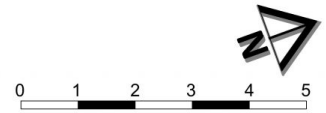


**LEVEL SIX**



**BASEMENT ONE**

ADDRESS:  
26/10-18 Robertson Street, Sutherland



DISCLAIMER: THIS IS FOR ILLUSTRATIVE PURPOSES ONLY, ALL DIMENSIONS ARE APPROXIMATE AND IT DOES NOT CONSTITUTE PART OF ANY LEGAL DOCUMENTS.