



26/515-521 President Avenue Sutherland NSW

2 1 2

Privately located with an elevated, northly first floor position within a popular and well-maintained security complex, this beautifully updated, modern two-bedroom apartment is ideally situated just moments to Sutherland village, train station and local amenities. Set away from the street and offering sunlit interiors, this incredibly comfortable apartment incorporates a spacious, free-flowing floorplan, and would suit the discerning purchaser seeking an ideal investment or first home purchase alike.

- Spacious, light and bright open-plan living and dining area with lush carpet, sliding door access to north facing entertainer's balcony with leafy, garden outlook
- Brand new carpet, paint and internal doors throughout
- Two oversized bedrooms, both carpeted and featuring

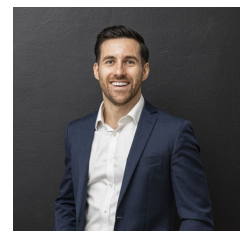
Type : Apartment

Price : \$ 750,000

View : <https://www.mattblakproperty.com.au/7440573>

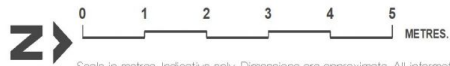
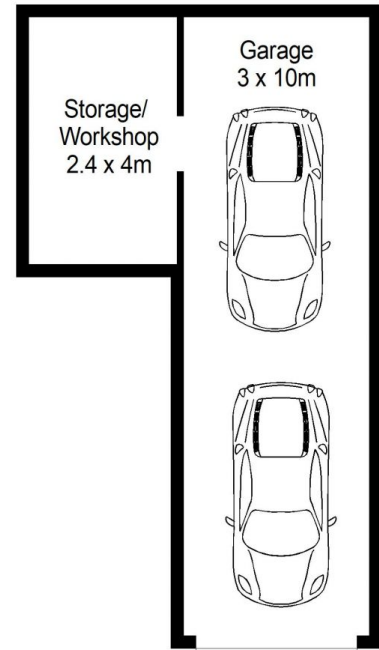
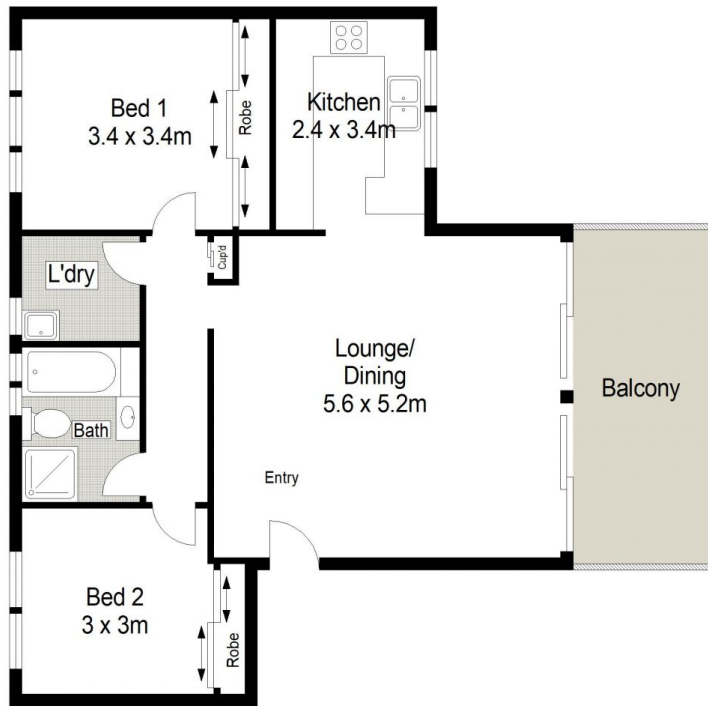


Cameron Mattison
9529 3433



Adam Sharp
9529 3433

[For full version visit the website](https://www.mattblakproperty.com.au)



26/515-521 President Avenue, Sutherland

2 1 2

Scale in metres. Indicative only. Dimensions are approximate. All information contained herein is gathered from sources we believe to be reliable. However we cannot guarantee its accuracy and interested persons should rely on their own enquiries.

