



1/235 Kingsway Caringbah NSW

2 1 1

Centrally located in the heart of Caringbah providing a spacious living area and grass courtyard this well-presented ground floor apartment is an excellent down-size, first home purchase or investment opportunity. Well situated on the ground floor of a security complex this 2 bedroom apartment with plenty of outdoor space is well situated within walking distance to Caringbah Station, Highfields and Caringbah CBD.

- Generously proportioned living and dining flows to the private outdoor entertaining courtyard
- Neat and tidy kitchen with integrated appliances and breakfast seating
- Two great size bedrooms, both with built-in wardrobes, ceiling fans and plantation shutters

[For full version visit the website](https://www.mattblakproperty.com.au/7439726)

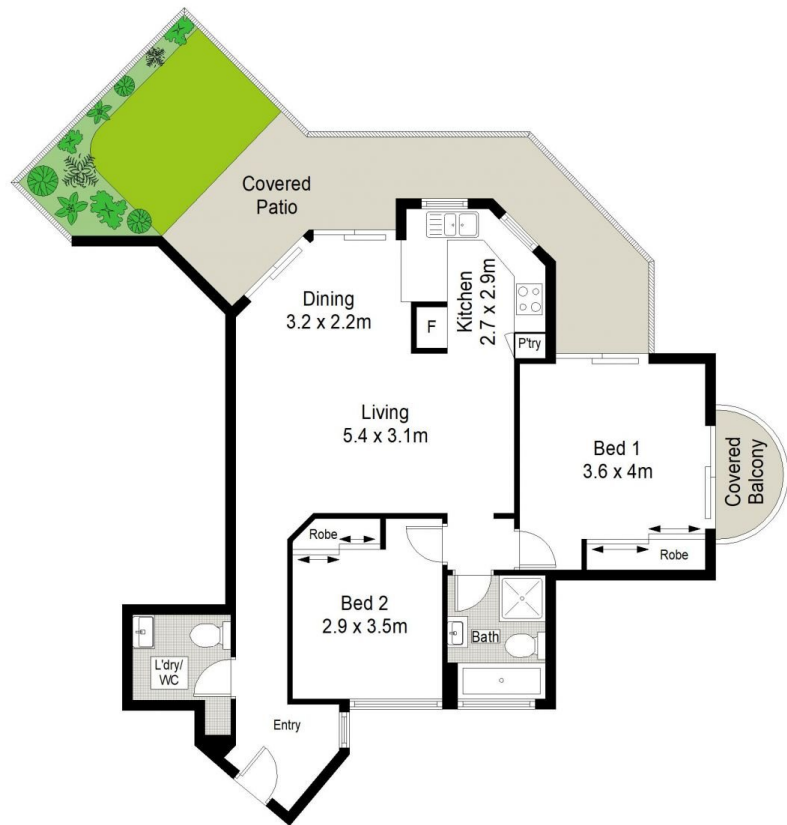
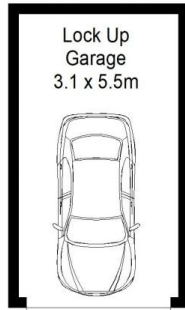
Type : Apartment
Price : \$ 710,000
Land Size : 113 sqm
View : <https://www.mattblakproperty.com.au/7439726>



Blake Spooner
9529 3433



Patrick Swanson
9529 3433



0 1 2 3 4 5 METRES.

1/235 Kingsway, Caringbah

2 1 1

Scale in metres. Indicative only. Dimensions are approximate. All information contained herein is gathered from sources we believe to be reliable. However we cannot guarantee its accuracy and interested persons should rely on their own enquiries.

