

6/43 Talara Road GyMEA NSW

2 1

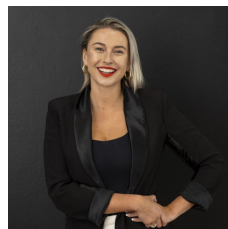
Ideally located a short walk from all that GyMEA Village has to offer, this central two-bedroom apartment provides the ultimate lifestyle of convenience.

HIGHLIGHTS:

- Spacious open plan living featuring stunning floors & split system AC
 - Seamlessly flow to the sunny balcony
 - Two bedrooms, both featuring mirrored built in robes
 - Updated bathroom with separate bath & shower
 - Modern kitchen with stainless-steel appliances & breakfast bar
 - Spacious internal laundry, parking on site and off-street parking
- * Pets upon application

Type : Apartment

View : <https://www.mattblakproperty.com.au/7433664>



Jasmine Quirk
9529 3433

[For full version visit the website](https://www.mattblakproperty.com.au)