



13 Ash Avenue Caringbah South NSW

5 3 2

Showcasing an exceptional eye to detail, this beautifully renovated Hamptons-inspired residence boasts custom high-end interiors and bespoke finishes. With multiple living and social spaces, this home is suited to entertainers and families alike.

Set on a level north-facing 866m2 block in an exclusive street surrounded by quality homes, and just a short stroll from sought after schools, parks and waterfront reserves.

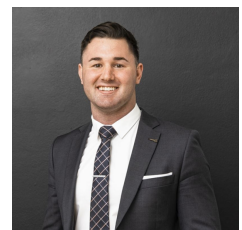
- Dual-level family home featuring high ceilings with ultra modern fittings and fixtures
- Oversized sliding stacker doors in the main living and dining enhance the light filled interiors

[For full version visit the website](https://www.mattblakproperty.com.au/7419173)

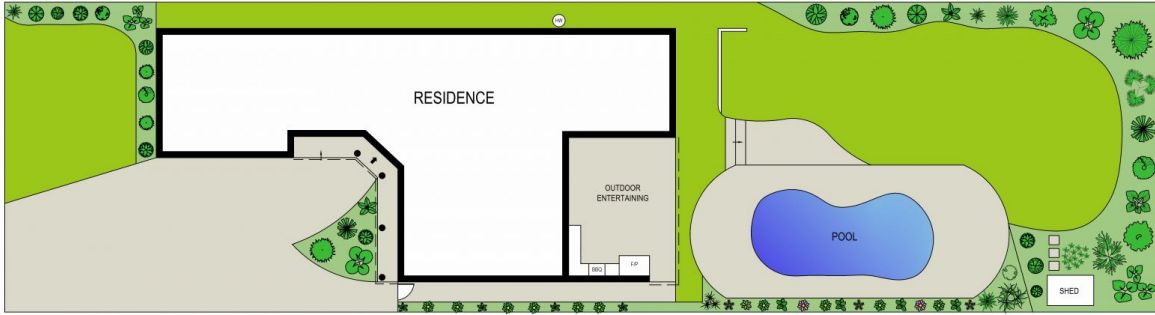
Type : House
Land Size : 866 sqm
View : <https://www.mattblakproperty.com.au/7419173>



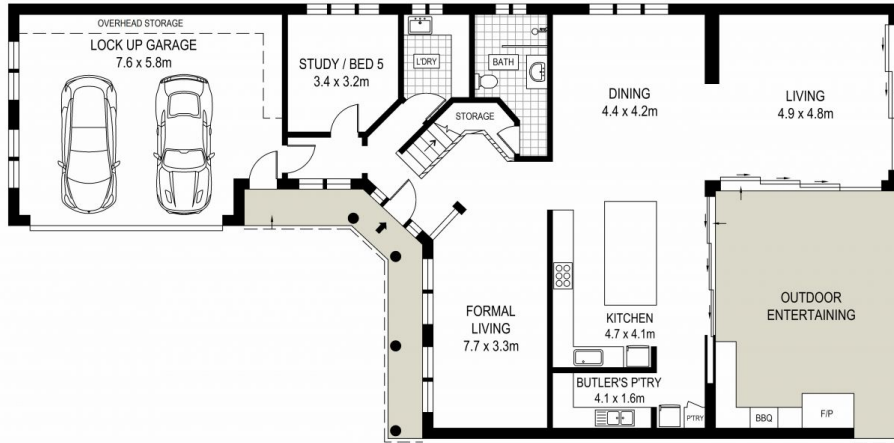
Matthew Johnston
9529 3433



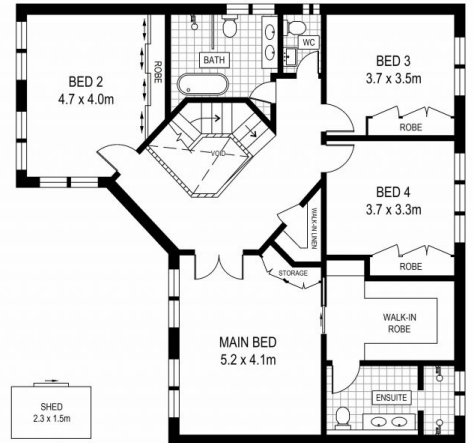
Billy Burke
9529 3433



SITE PLAN (NOT TO SCALE)



GROUND FLOOR



FIRST FLOOR



0 1 2 3 4 5

ADDRESS:
13 Ash Avenue, Caringbah South

DISCLAIMER: THIS IS FOR ILLUSTRATIVE PURPOSES ONLY, ALL DIMENSIONS ARE APPROXIMATE AND IT DOES NOT CONSTITUTE PART OF ANY LEGAL DOCUMENTS.