



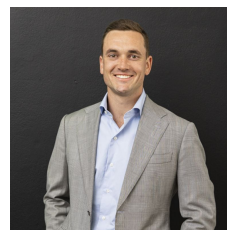
**2/20 Harnleigh Avenue Woollooware NSW**

2 1 1

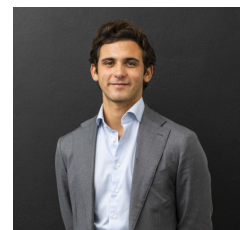
This well-maintained home is positioned in a neat over 55's complex. Single level and conveniently located just minutes to local public transport, shops and medical facilities, this well-loved, comfortable villa is ideal for those looking at down sizing or assisting a family member in their search for a reliable place to call home.

- Neat and tidy well-maintained brick complex with flat access from the street
- Open plan living and dining area with fresh flooring and bathed with North facing light
- Spacious kitchen with ample storage, electric cooktop, oven and rangehood
- Separate internal laundry with access to private level courtyard with low maintenance lawn

**Type** : Villa  
**Land Size** : 132 sqm  
**View** : <https://www.mattblakproperty.com.au/7406089>

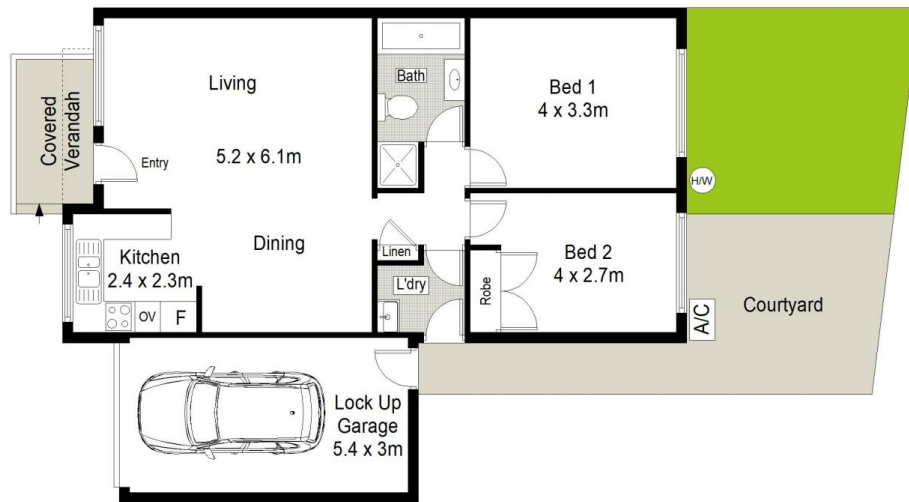


**Blake Spooner**  
9529 3433



**Luke Ingram**  
9529 3433

[For full version visit the website](https://www.mattblakproperty.com.au)



0 1 2 3 4 5 METRES.

**2/20 Harnleigh Avenue, Woollooware**

2 1 1

Scale in metres. Indicative only. Dimensions are approximate. All information contained herein is gathered from sources we believe to be reliable. However we cannot guarantee its accuracy and interested persons should rely on their own enquiries.

