



23/500 President Avenue Sutherland NSW

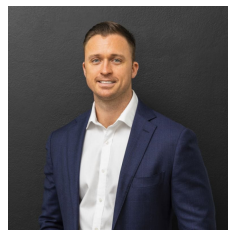
2 1 1

Positioned on the first floor within a well-maintained secure complex, this generously proportioned apartment offers modern, and light filled interiors. Only a short walk from local restaurants, cafes, shops and transport providing an exceptional opportunity for first home buyers, investors and downsizers alike.

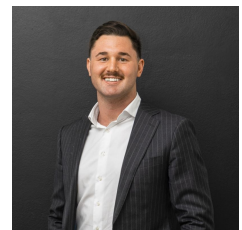
- Open plan living dining and kitchen
- Modern kitchen with stone bench tops, breakfast bar, gas cooking & ample cupboard space
- Spacious bedrooms complete with built-in wardrobes, one with private balcony
- Bathroom with separate bath and shower, floor to ceiling tiles
- Internal laundry with w/c

Type : Apartment

View : <https://www.mattblakproperty.com.au/7405578>

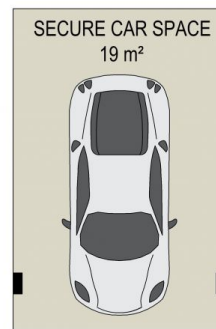
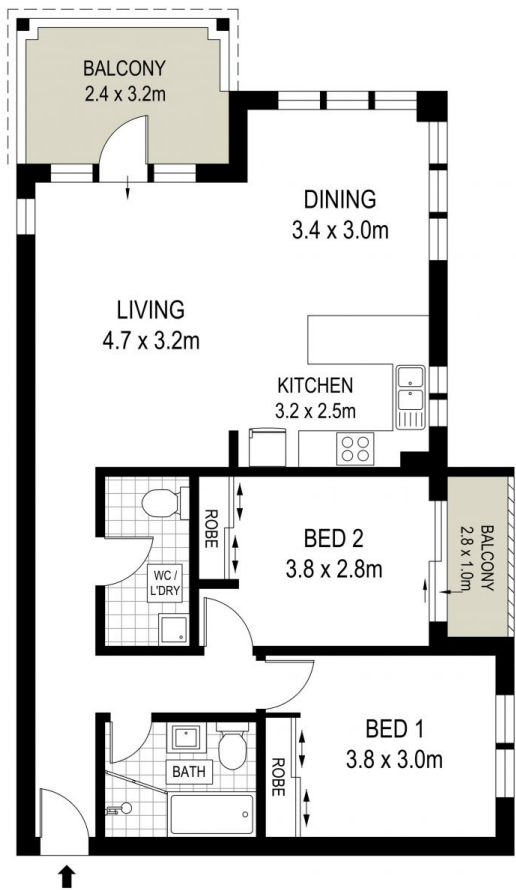


Matthew Johnston
9529 3433

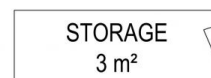


Billy Burke
9529 3433

[For full version visit the website](https://www.mattblakproperty.com.au)



UPPER BASEMENT



LOWER BASEMENT

ADDRESS:
23/500 President Avenue, Sutherland

FIRST FLOOR



DISCLAIMER: THIS IS FOR ILLUSTRATIVE PURPOSES ONLY, ALL DIMENSIONS ARE APPROXIMATE AND IT DOES NOT CONSTITUTE PART OF ANY LEGAL DOCUMENTS.