



32/38-40 Chapman Street Gymea NSW

2  1  1 

This open and airy top floor apartment is ideally located within a short walk to Gymea shopping village & train station. With a leafy outlook and peaceful surrounds, this apartment is not to be missed.

Type : Apartment

View : <https://www.mattblakproperty.com.au/7288989>

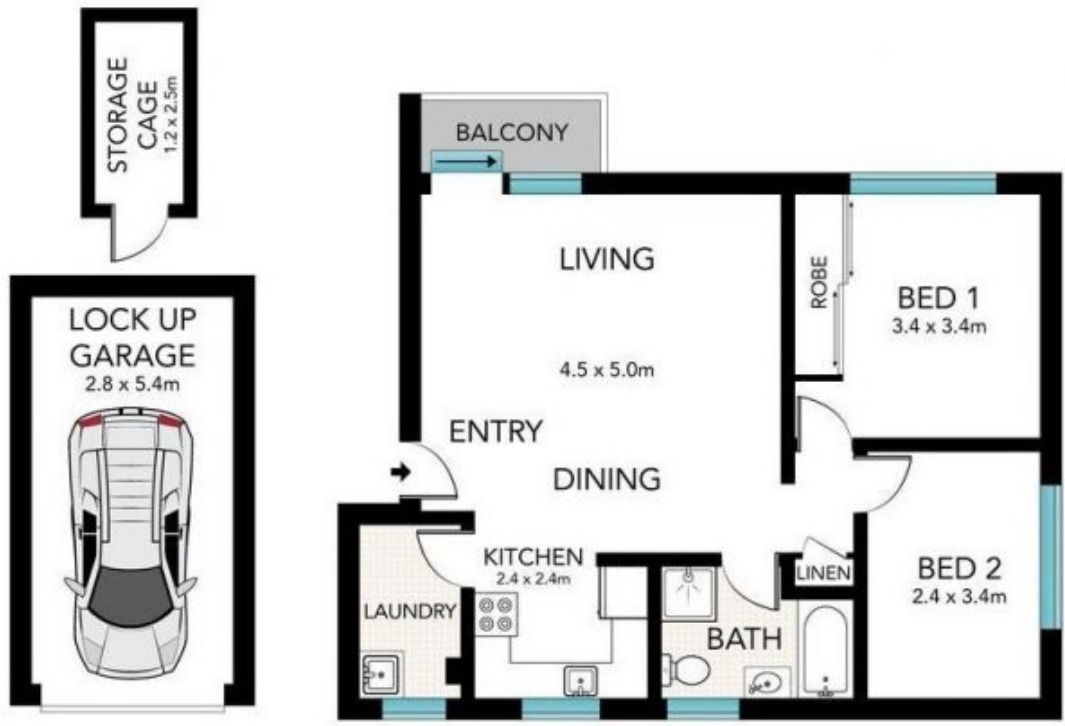
HIGHLIGHTS:

- Bright and open-plan lounge room with split A/C
- Updated u-shape kitchen with gas cooking
- Two plush carpeted bedrooms, main with built-in robe
- Large bathroom with separate bath and shower
- Single lock up garage within basement, additional storage cage
- Located just a short walk to Gymea village shops, cafes and local schools



Jasmine Quirk
9529 3433

[For full version visit the website](https://www.mattblakproperty.com.au)



Scale in metres. Indicative only. Dimensions are approximate. All information contained herein is gathered from sources we believe to be reliable. However, we cannot guarantee its accuracy and interested persons should rely on their own enquiries.