

33/16-24 Chapman Street Gymea NSW

2 1 1

Occupying an ideal north facing position on the ground floor of a central, well maintained complex, and just moments to the beautiful Gymea Village, this well-presented apartment offers total convenience and a modern, easy-care lifestyle with walk-to-everything appeal. Offering a large open plan living and dining space flowing to the north facing entertainers' balcony, plus two sizeable bedrooms with built-in robes, this outstanding apartment presents an ideal buying opportunity for downsizers, investors and first home buyers alike.

- Two well-proportioned carpeted bedrooms, both with generous mirrored built-in robes
- Oversized and open-plan lounge and dining area with sliding door access to the sunlit, north facing balcony

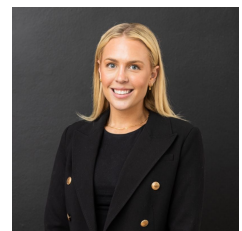
Type : Apartment

Price : \$ 701,000

View : <https://www.mattblakproperty.com.au/7163853>

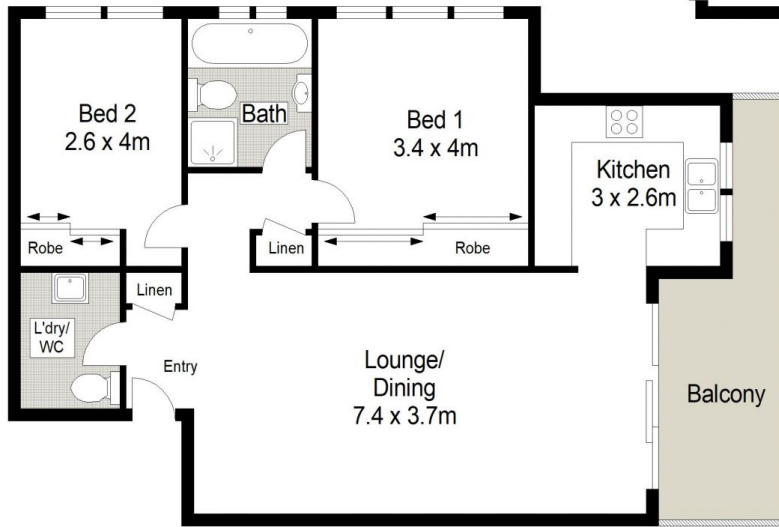
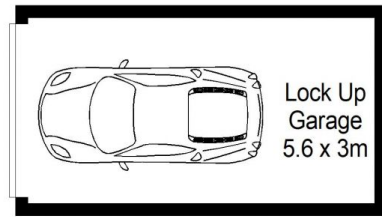


Patrick Swanson
9529 3433



Madison Long
9529 3433

[For full version visit the website](https://www.mattblakproperty.com.au)



GROUND FLOOR



0 1 2 3 4 5 METRES.

33/16-24 Chapman Street, Gymea

2 1 1

Scale in metres. Indicative only. Dimensions are approximate. All information contained herein is gathered from sources we believe to be reliable. However we cannot guarantee its accuracy and interested persons should rely on their own enquiries.

