



262 Northcliffe Drive Lake Heights NSW

4 1 2

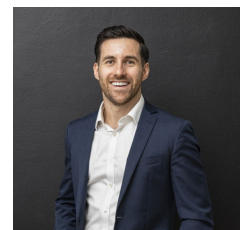
Enviably positioned on the high side of the street, capturing stunning views of Lake Illawarra and incorporating a family friendly floorplan, this solid brick home presents itself as an ideal opportunity for a young couple, growing family or investment buyer seeking a well-presented home, with great character and potential throughout. Set in a convenient position close to Lake Heights Public School, within walking distance to the foreshore, and moments to Warrawong Plaza, and Wollongong CBD.

- Large living area offering panoramic water views, including polished timber flooring and glass sliding door access to front facing balcony
- Open-plan kitchen features plentiful storage, adjoining dining area

Type : House
Land Size : 588.06 sqm
View : <https://www.mattblakproperty.com.au/71448>
68

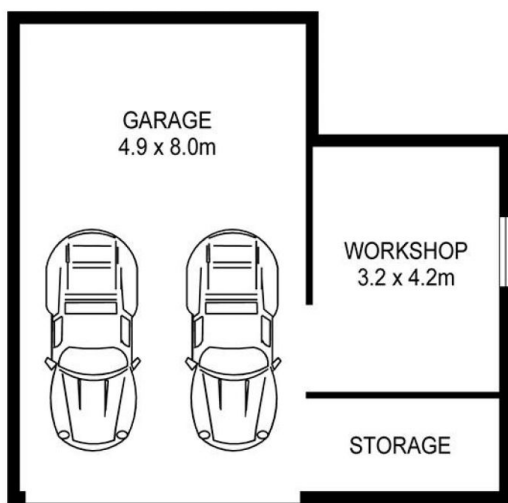


Cameron Mattison
9529 3433

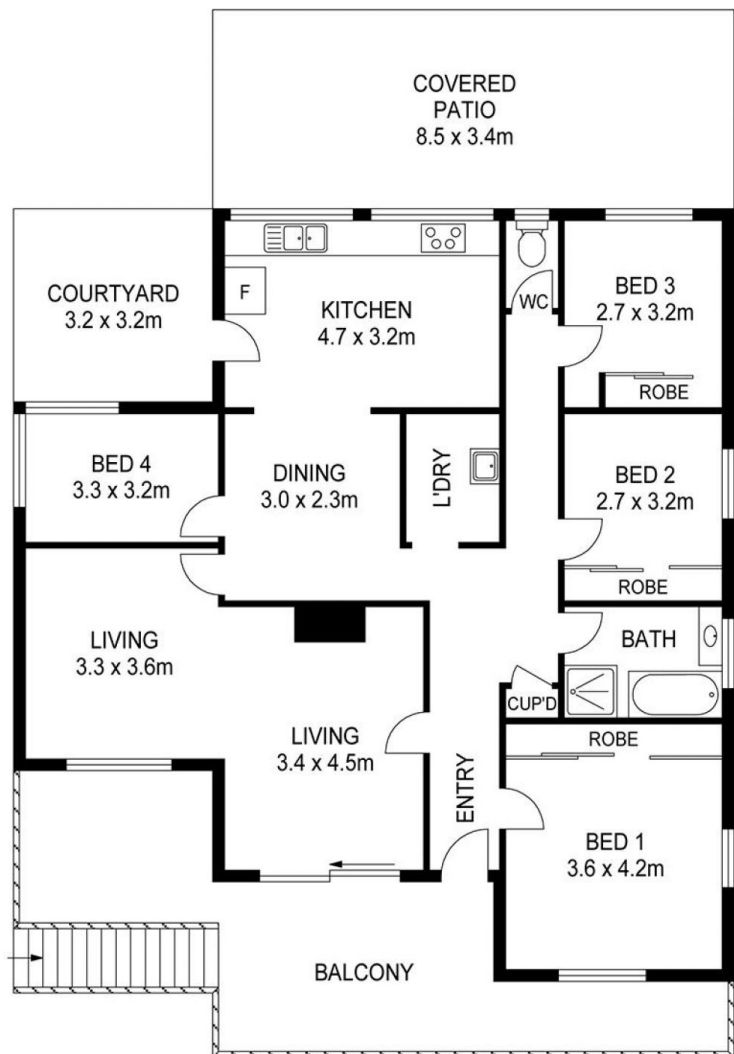


Adam Sharp
9529 3433

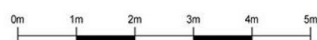
[For full version visit the website](https://www.mattblakproperty.com.au)



GROUND FLOOR



FIRST FLOOR



SCALE (METRES)

PLANS SHOWN ONLY INDICATIVE OF LAYOUT. DIMENSIONS ARE APPROXIMATE.

262 NORTHCLIFFE DRIVE, LAKE HEIGHTS