



311/3 Penprase Lane Miranda NSW

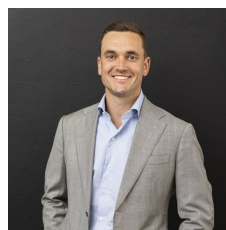
1 1 1

Offering light filled and modern interiors, this well presented apartment features a flowing floorplan and luxurious finishes. Positioned in a contemporary complex with lift access, secure parking and conveniently located just moments to shops, restaurants, gyms and Seymour Shaw Park. Offering an ideal low-maintenance lifestyle this apartment is perfect for a first home buyer, downsizer or investor.

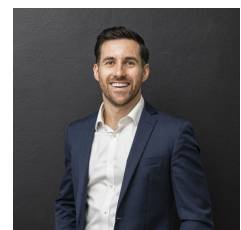
- Modern kitchen with gas cooktop, quality stainless steel appliances and stone benchtops
- Quality carpet and timber flooring and ducted air conditioning throughout
- Separate study/home office with room for a desk and ample built-in storage

[For full version visit the website](https://www.mattblakproperty.com.au/71448)

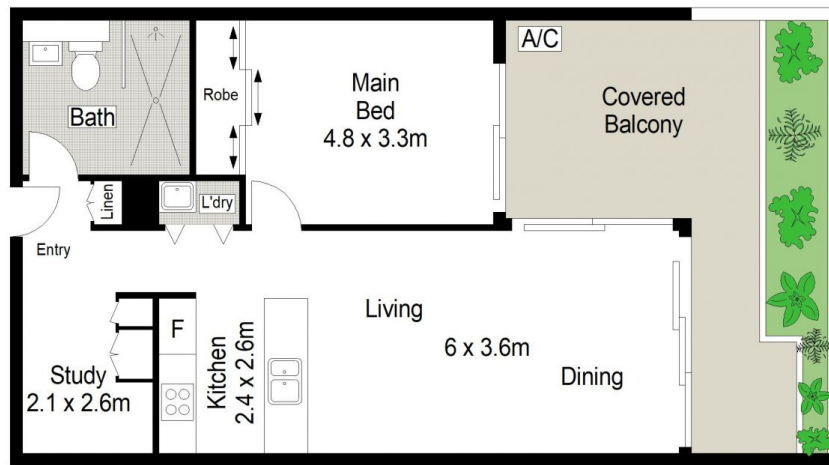
Type : Apartment
Price : \$ 655,000
Land Size : 100 sqm
View : <https://www.mattblakproperty.com.au/71448>
 67



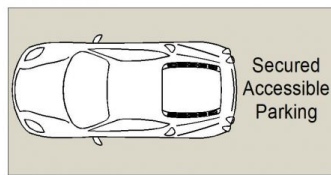
Blake Spooner
9529 3433



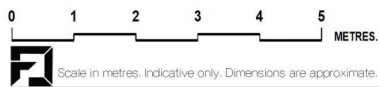
Adam Sharp
9529 3433



LEVEL THREE



ROOF LEVEL



Scale in metres. Indicative only. Dimensions are approximate. All information contained herein is gathered from sources we believe to be reliable. However we cannot guarantee its accuracy and interested persons should rely on their own enquiries.



311/3 Penprase Lane, Miranda

**matt
blak**