



9/616-618 Princes Highway Kirrawee NSW

2 **1** **1**

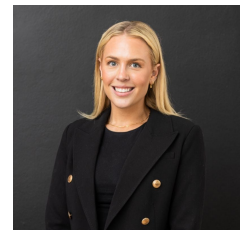
Privately located with an elevated ground-floor position within a popular and well-maintained security complex, this beautifully presented, modern two-bedroom apartment is ideally situated just moments to Kirrawee village, train station and south village shopping precinct. Set away from the street and offering a sunny, northerly aspect with leafy outlook, this light-filled, renovated apartment would suit the discerning purchaser seeking an ideal investment or first home purchase alike.

- Two oversized bedrooms, both carpeted and featuring mirrored built-in wardrobes
- Spacious, light and bright open-plan living and dining area with easy-care timber-style flooring, and split-system air-conditioning
- Living and dining zones flow seamlessly to oversized, north facing entertainer's balcony

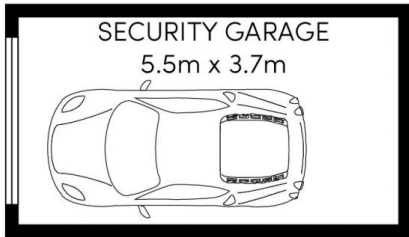
Price : \$ 728,000
Building Size : 94 sqm
View : <https://www.mattblakproperty.com.au/7144855>



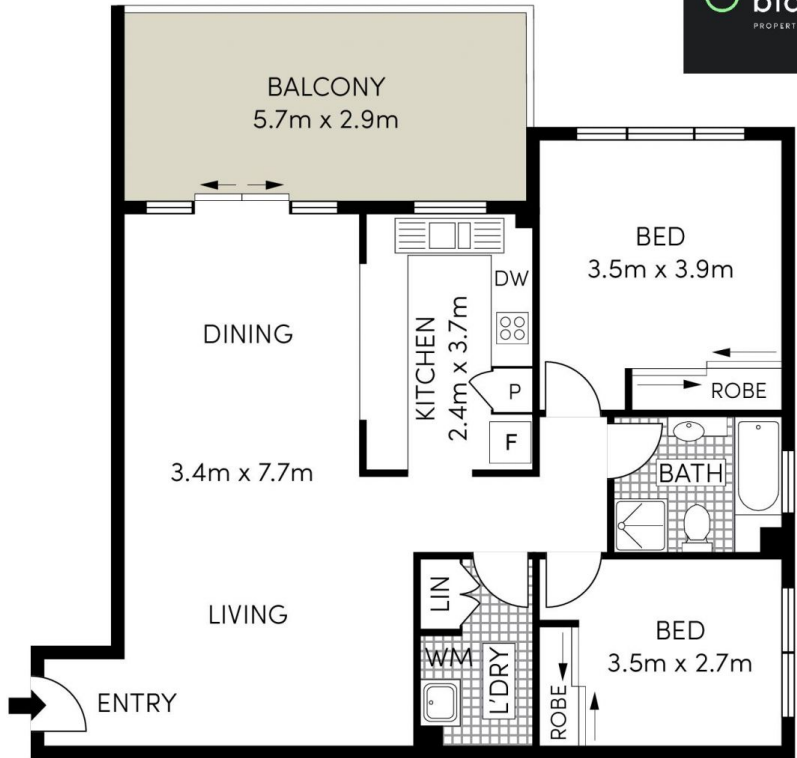
Patrick Swanson
9529 3433



Madison Long
9529 3433



LOWER FLOOR



GROUND FLOOR

Whilst bwwm.com.au has made every attempt to ensure the accuracy of the floor plan contained here, measurements are approximate and no responsibility is taken for any error, omission, or mis-statement. This plan is for illustrative purposes only.



9/616-618 Princes Highway

Kirrawee