



63B Wyralla Road Miranda NSW

4 3 2

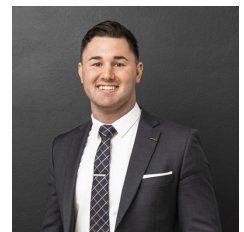
On the border of Yowie Bay, this cleverly designed Duplex by renowned architect Jamie Ground has an impressive commitment to contemporary style and effortless comfort. Ideal position within walking distance of Miranda station and Westfield this home is perfect for the growing family.

View : <https://www.mattblakproperty.com.au/7144852>

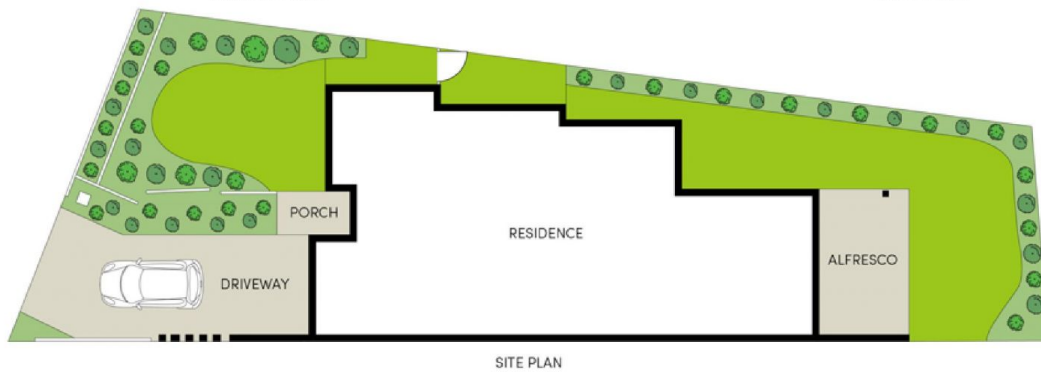
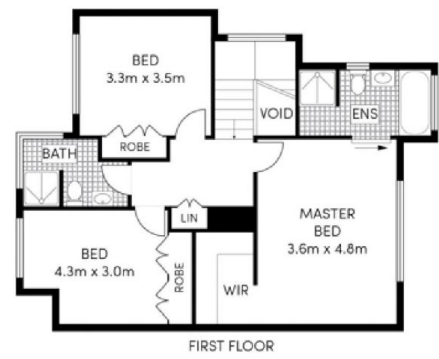
- Open plan living with high ceilings throughout
- Indoor/Outdoor flow to an all season north facing alfresco area
- Stone kitchen includes Smeg appliances with gas cooking
- Three generous sized bedrooms, master includes a walk in robe and luxury en-suite
- Downstairs fourth bedroom option / media room with full bathroom
- Alarm system, multi zone air conditioning, gas heating
- Single lock up garage with plenty of off street parking
- Child friendly yard with manicured gardens



Matthew Johnston
9529 3433



Billy Burke
9529 3433



Whilst bwrn.com.au has made every attempt to ensure the accuracy of the floor plan contained here, measurements are approximate and no responsibility is taken for any error, omission, or mis-statement. This plan is for illustrative purposes only.



63B Wyralla Road

Miranda