



1/61-65 Glencoe Street Sutherland NSW

2 1 1

Centrally located in the heart of Sutherland, this elevated, ground floor apartment encompasses a private position, and spacious floorplan with updated interiors, including brand-new carpet and painting throughout. The large open-plan living and dining zones, adjoining kitchen, all free-flowing to the elevated and covered balcony.

Type : Apartment
Price : \$ 645,000
Building Size : 99 sqm
View : <https://www.mattblakproperty.com.au/7144848>

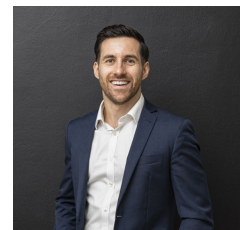
The apartment offers a comfortable sanctuary, and low-maintenance appeal ideally situated with level-walk convenience to Sutherland CBD, train station, and all local amenities.

- Immaculate original kitchen includes plentiful storage options and plantation shutters
- Spacious, open-plan lounge and dining zone with glass

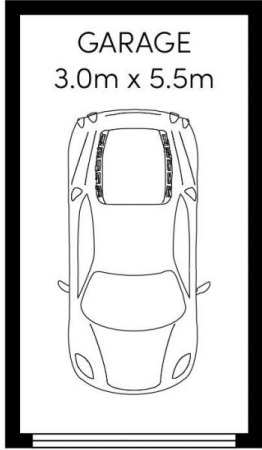
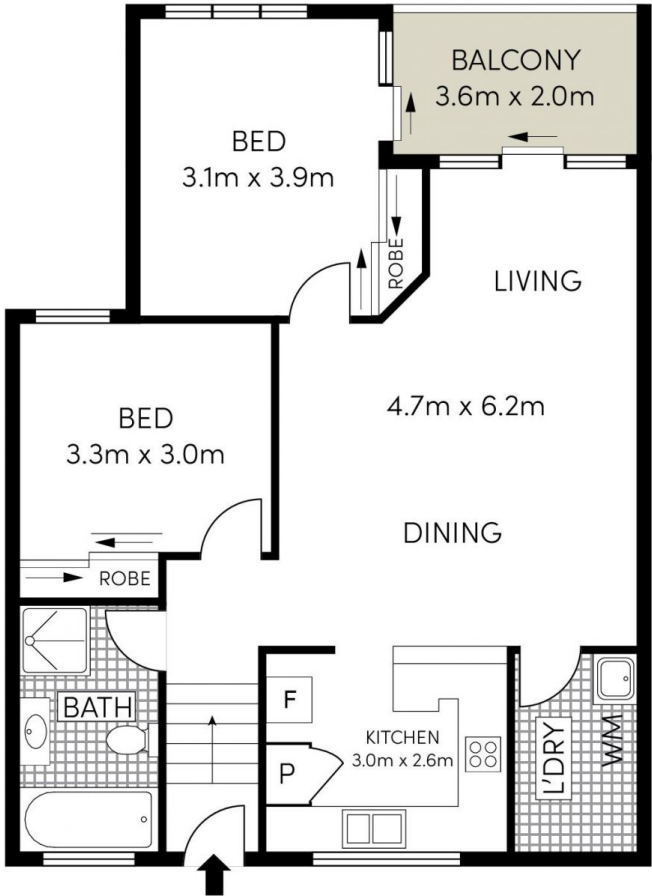
[For full version visit the website](https://www.mattblakproperty.com.au)



Cameron Mattison
9529 3433



Adam Sharp
9529 3433



(NOT IN POSITION)



Whilst bwrn.com.au has made every attempt to ensure the accuracy of the floor plan contained here, measurements are approximate and no responsibility is taken for any error, omission, or mis-statement. This plan is for illustrative purposes only.