



**302/16 Warburton Street Gymea NSW**

2 2 2

Serenely located on the top-floor, this modern lifestyle apartment encompassing a spacious design and light-filled interiors, including the impressive stylish kitchen, open-plan living and dining zones, all free-flowing to the sunny, oversized north-facing entertainer's balcony with pleasant, open outlook.

Offering well-proportioned accommodation, with quality finishes, the apartment offers a private, sun-lit sanctuary, and low-maintenance lifestyle ideally placed with lift access, and level-walk convenience to Gymea Village, and local amenities.

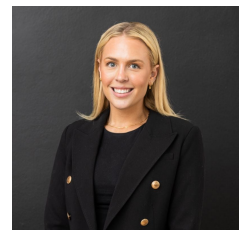
- Designer-style kitchen includes large island bench with breakfast bar, 40 mm stone benchtops, quality appliances, gas cooking, and abundant storage options
- Oversized and open-plan lounge and dining area with

**Price** : \$ 1,085,000

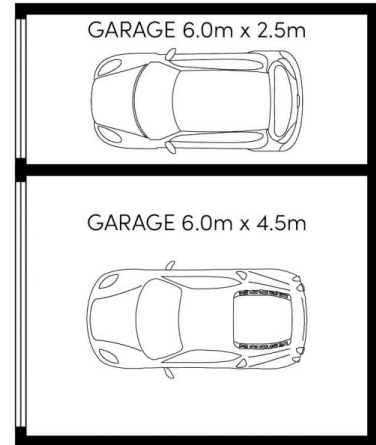
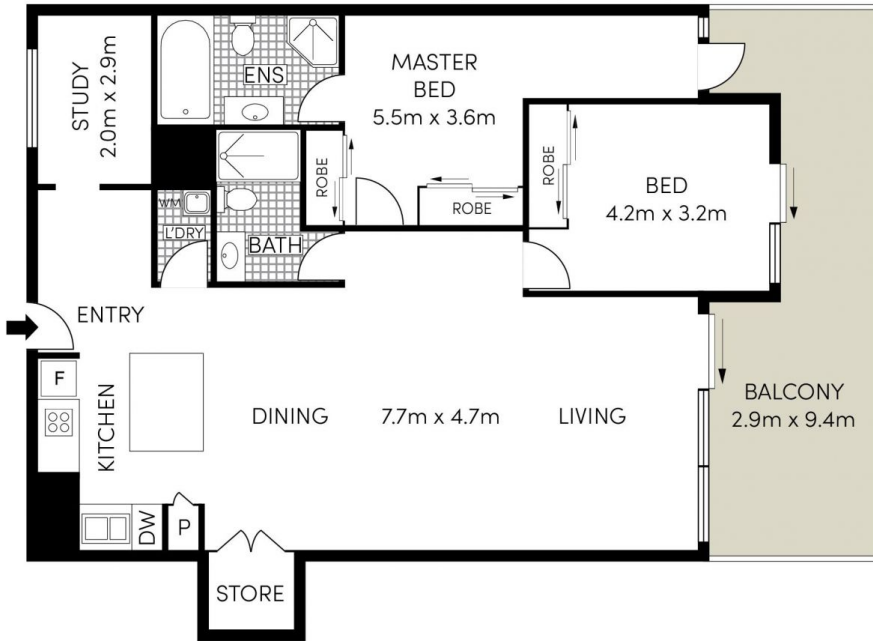
**View** : <https://www.mattblakproperty.com.au/7144847>



**Patrick Swanson**  
9529 3433



**Madison Long**  
9529 3433



(NOT IN POSITION)



Whilst [bwrm.com.au](http://bwrm.com.au) has made every attempt to ensure the accuracy of the floor plan contained here, measurements are approximate and no responsibility is taken for any error, omission, or mis-statement. This plan is for illustrative purposes only.



302/16 Warburton Street

GyMEA